

## Prices Dashboard

Data up to October 2024

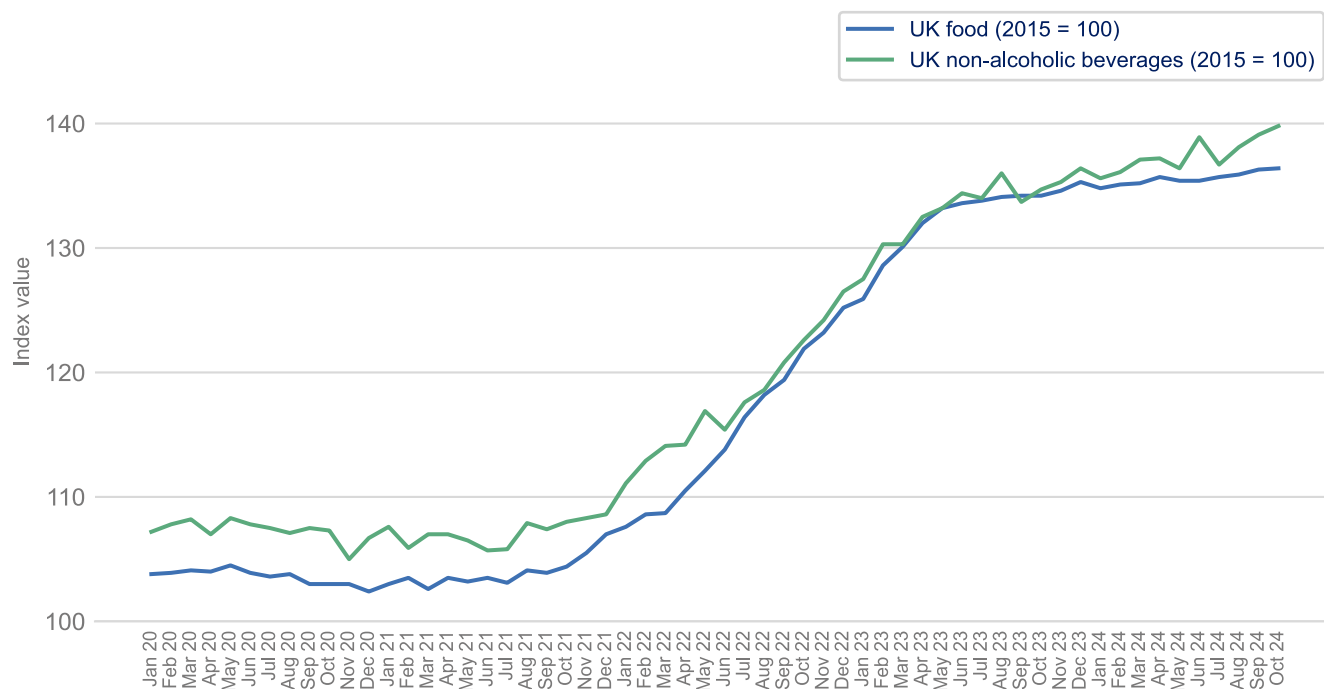


Category		Value	Monthly change, %	Yearly change, %
UK food and non-alcoholic drink inflation (CPIH)				
UK food	Index	136.4	▲ 0.1%	▲ 1.6%
UK non-alcoholic drink	Index	139.8	▲ 0.5%	▲ 3.8%
UK producer prices (PPI)				
Input prices: domestic food	Index	143.5	▼ - 0.3%	▲ 1.6%
Input prices: imported food	Index	163.1	▼ - 0.9%	▼ - 5.8%
Output prices: food for domestic market	Index	135.0	▼ - 0.4%	▲ 1.3%
Energy prices and transportation				
Crude oil, brent (\$/bbl)	Price	75.66	▲ 1.8%	▼ - 16.9%
Natural gas (\$/mmbtu)	Price	12.92	▲ 9.6%	▼ - 11.3%
UK natural gas (£/thm)	Price	102.81	▲ 6.3%	▼ - 17.1%
Shipping container rates	Index	3521.6	▼ - 27.2%	▲ 227.2%
UK haulage	Index	126.7	▼ - 1.3%	▲ 5.1%
Fertiliser	Index	143.6	▼ - 0.6%	▼ - 10.0%
Packaging				
Paper and paperboard	Index	130.7	▲ 0.6%	▼ - 1.4%
Wooden containers	Index	150.8	▼ - 1.3%	▲ 3.4%
Aluminium (\$/mt)	Price	2,595.58	▲ 5.9%	▲ 18.4%
Agricultural raw materials				
Sunflower oil (\$/mt)	Price	1,205.71	▲ 12.9%	▲ 32.5%
Rapeseed oil (\$/mt)	Price	1,142.14	▲ 5.5%	▲ 7.7%
Palm oil (\$/mt)	Price	1,077.25	▲ 9.6%	▲ 33.9%
Wheat, US HRW (\$/mt)	Price	272.85	▲ 1.2%	▼ - 8.5%
Maize (\$/mt)	Price	190.34	▲ 2.9%	▼ - 17.5%
Rice (\$/mt)	Price	515.00	▼ - 11.2%	▼ - 12.7%
Soybeans (\$/mt)	Price	442.10	▲ 13.0%	▼ - 16.5%
Feed wheat (UK)	Index	110.4	▲ 1.2%	▼ - 1.5%
Sugar (\$/kg)	Price	0.46	▲ 3.1%	▼ - 18.6%
Cheese (£/tonne)	Price	4,300	▲ 3.6%	▲ 30.7%
Butter (£/tonne)	Price	6,500	▼ - 3.4%	▲ 59.7%
Skimmed milk powder (£/tonne)	Price	2,090	▼ - 2.8%	▼ - 5.9%
Cocoa (\$/tonne)	Price	6,582.86	▲ 2.5%	▲ 78.3%
Beef (UK)	Index	144.8	▲ 2.0%	▲ 8.1%
Chicken (UK)	Index	102.0	▼ - 1.8%	▼ - 20.2%
Pork (UK)	Index	130.4	▲ 0.1%	▼ - 6.9%
Potatoes (UK)	Index	279.9	— 0.0%	▲ 23.5%
Fish (UK)	Index	145.1	▼ - 0.3%	▲ 2.7%

## UK food and non-alcoholic drink inflation (CPIH)

[Back to Title Page](#)

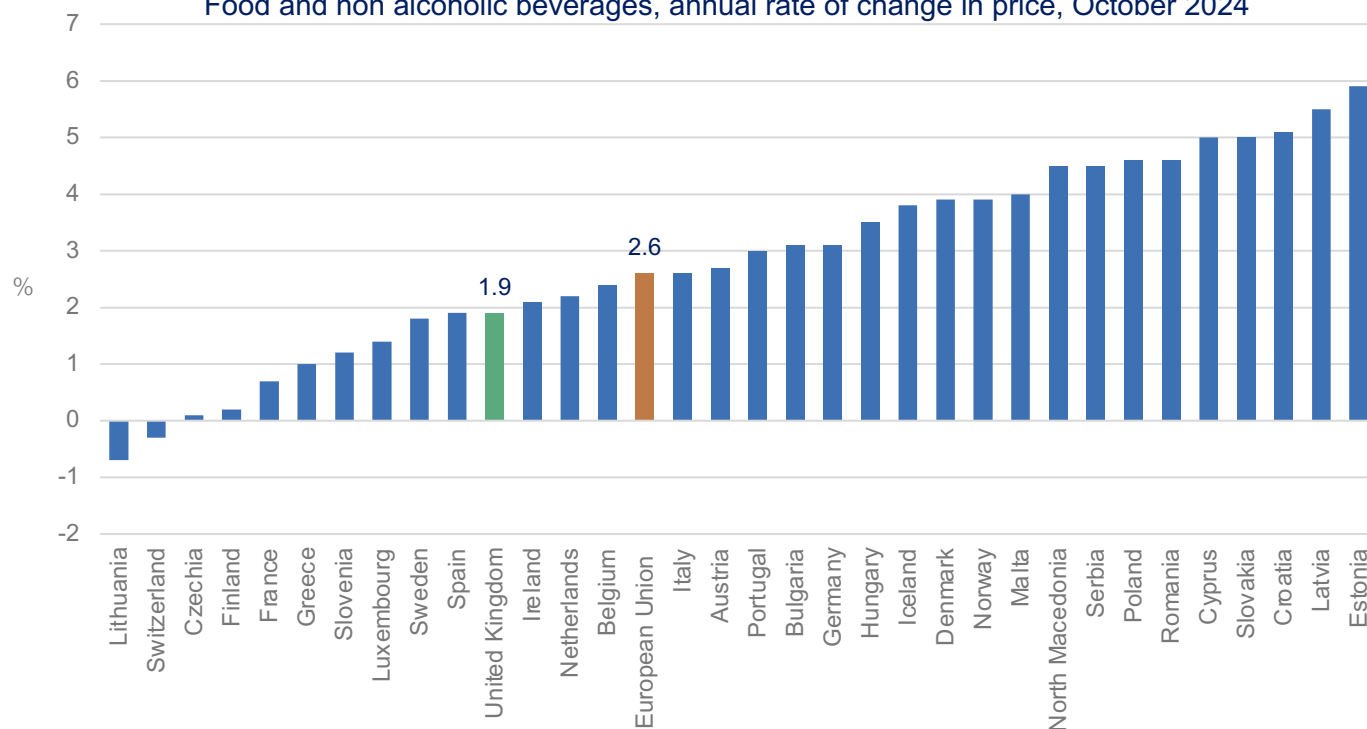
### UK food and UK non-alcoholic beverages



Source: Office for National Statistics

## Food and drink inflation comparison with Europe

### Food and non alcoholic beverages, annual rate of change in price, October 2024

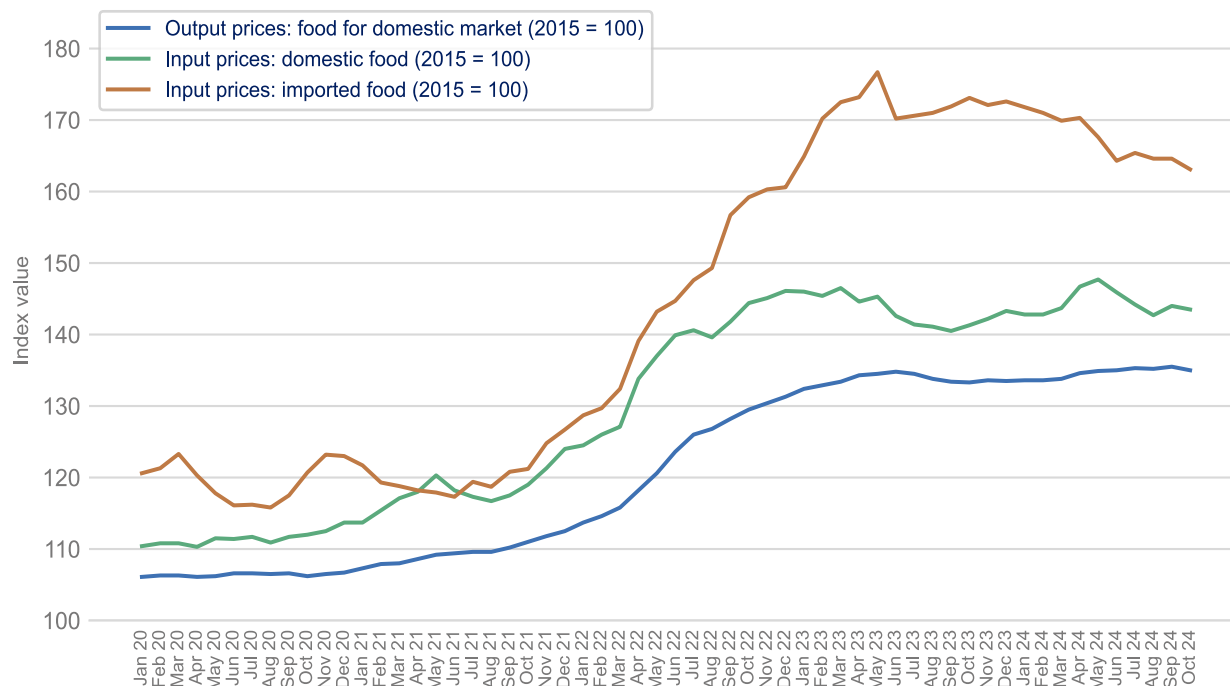


Source: Eurostat

## UK producer prices (PPI)

[Back to Title Page](#)

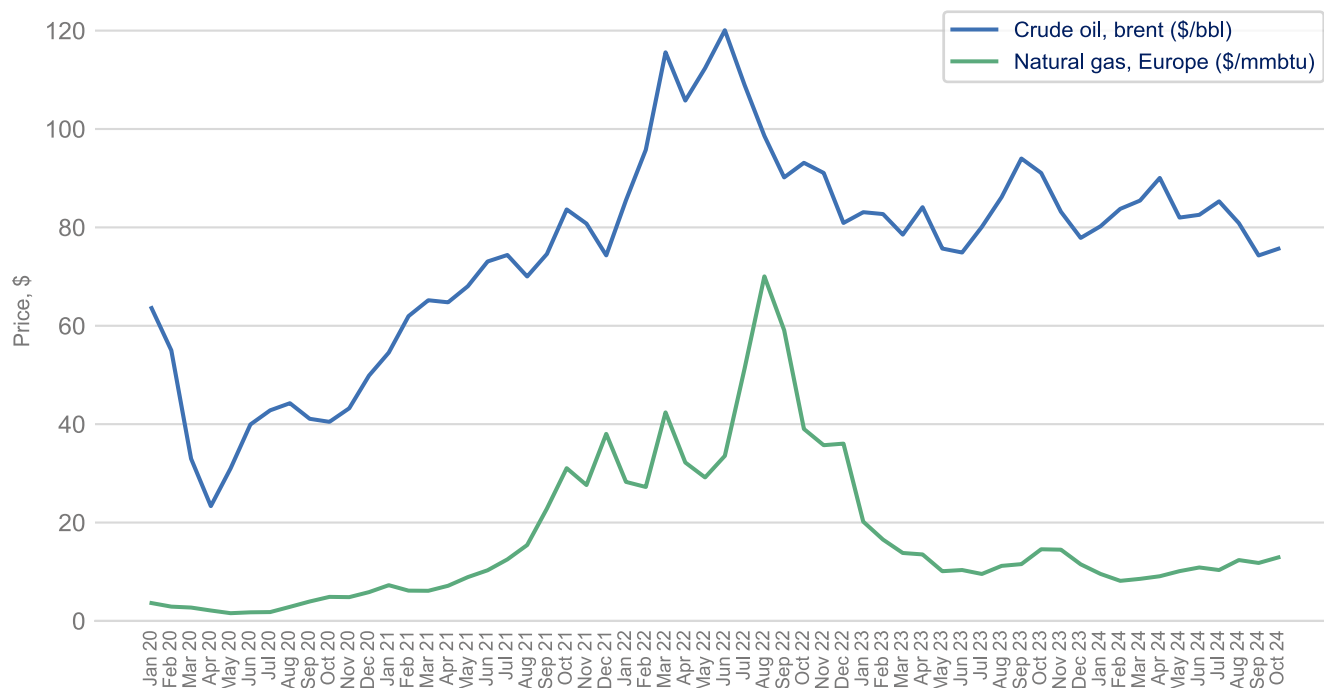
Input prices (domestic food), input prices (imported food), output prices (food for domestic market)



Source: Office for National Statistics

## Energy prices and transportation

### Crude oil and natural gas



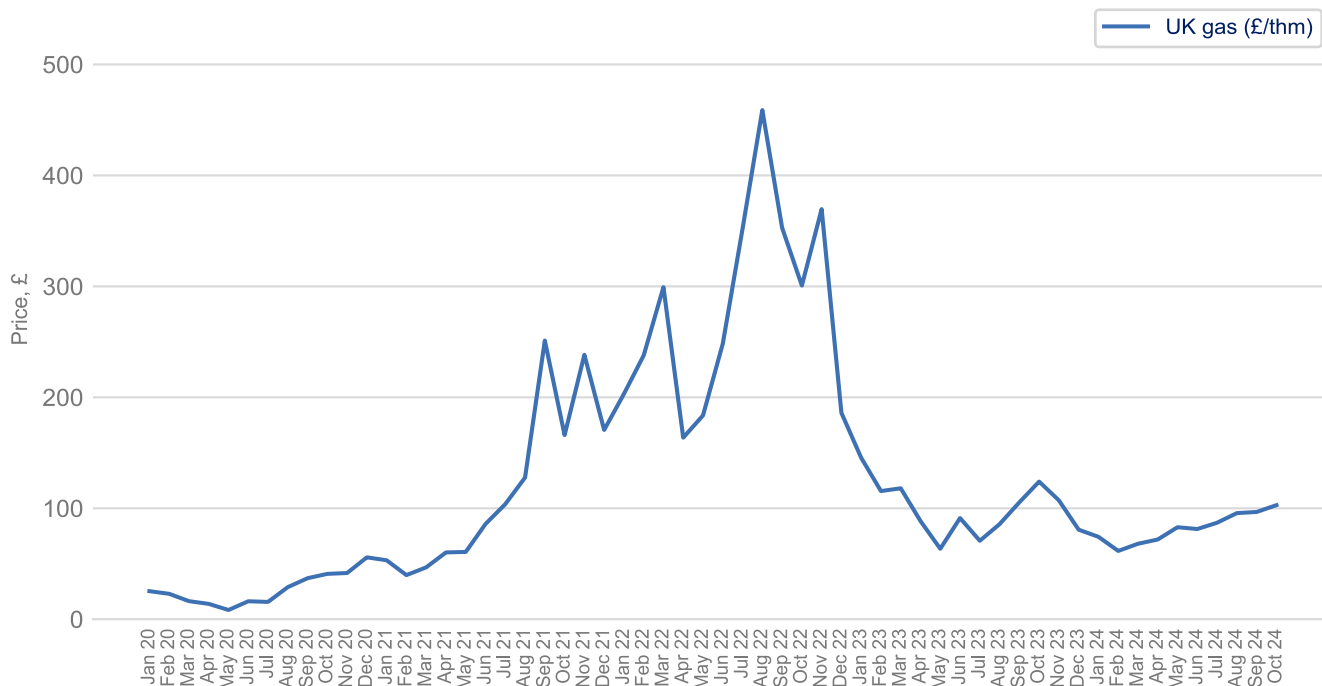
Source: World Bank Commodity Price Data

## Prices Dashboard

Data up to October 2024

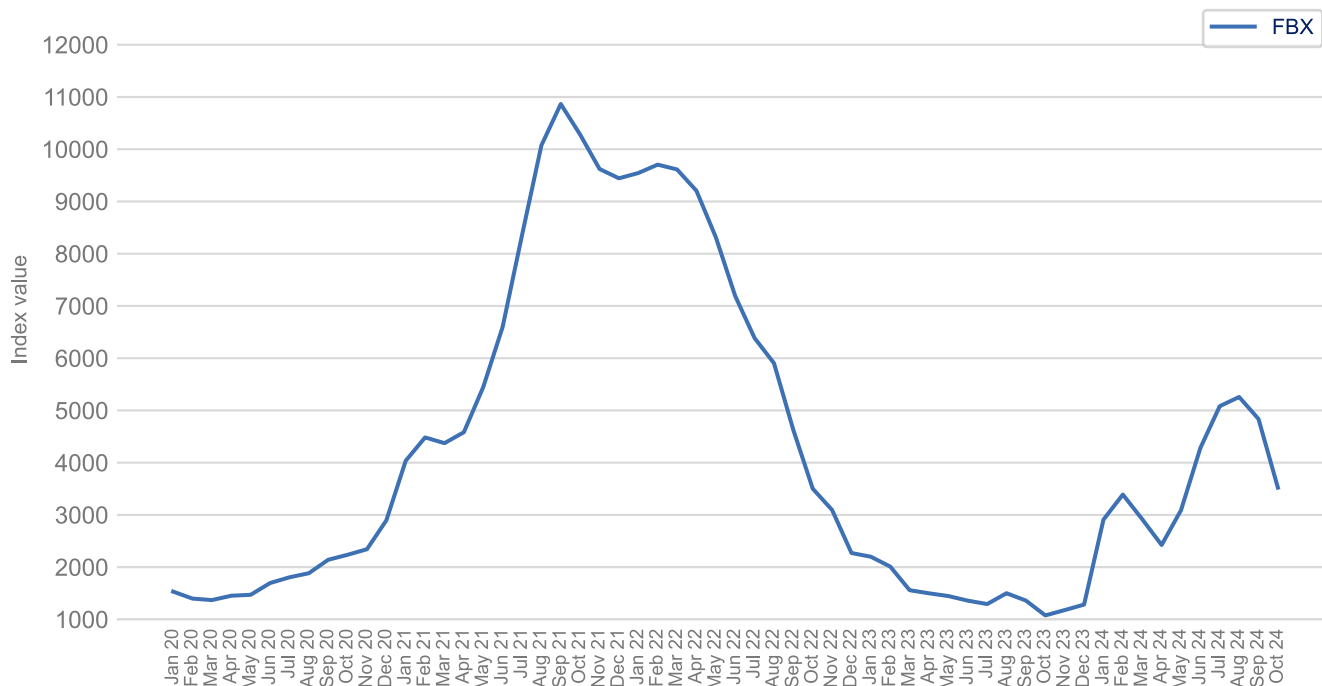
[Back to Title Page](#)

### UK natural gas



Source: Trading Economics

### Freightos Baltic Index (FBX): Global Container Freight Index



Source: Freightos, Global Container Index

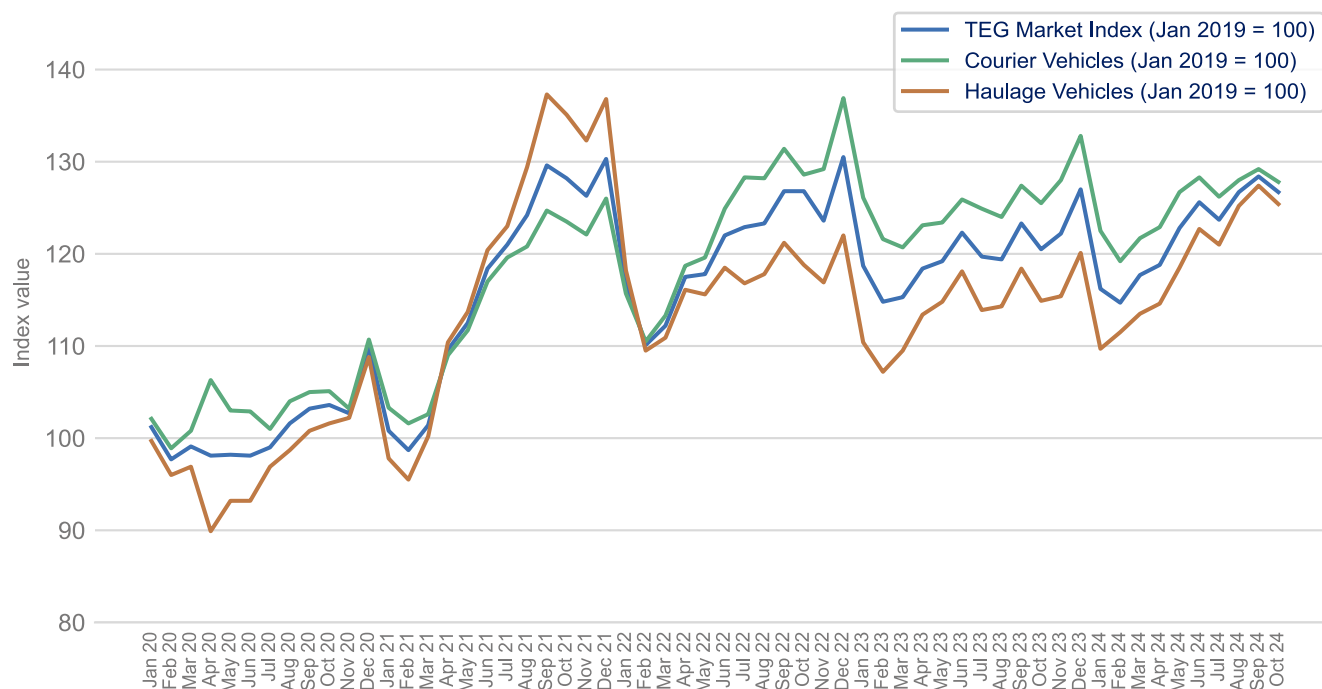
Note: Each monthly index value is an average of the weekly index values of that month

## Prices Dashboard

Data up to October 2024

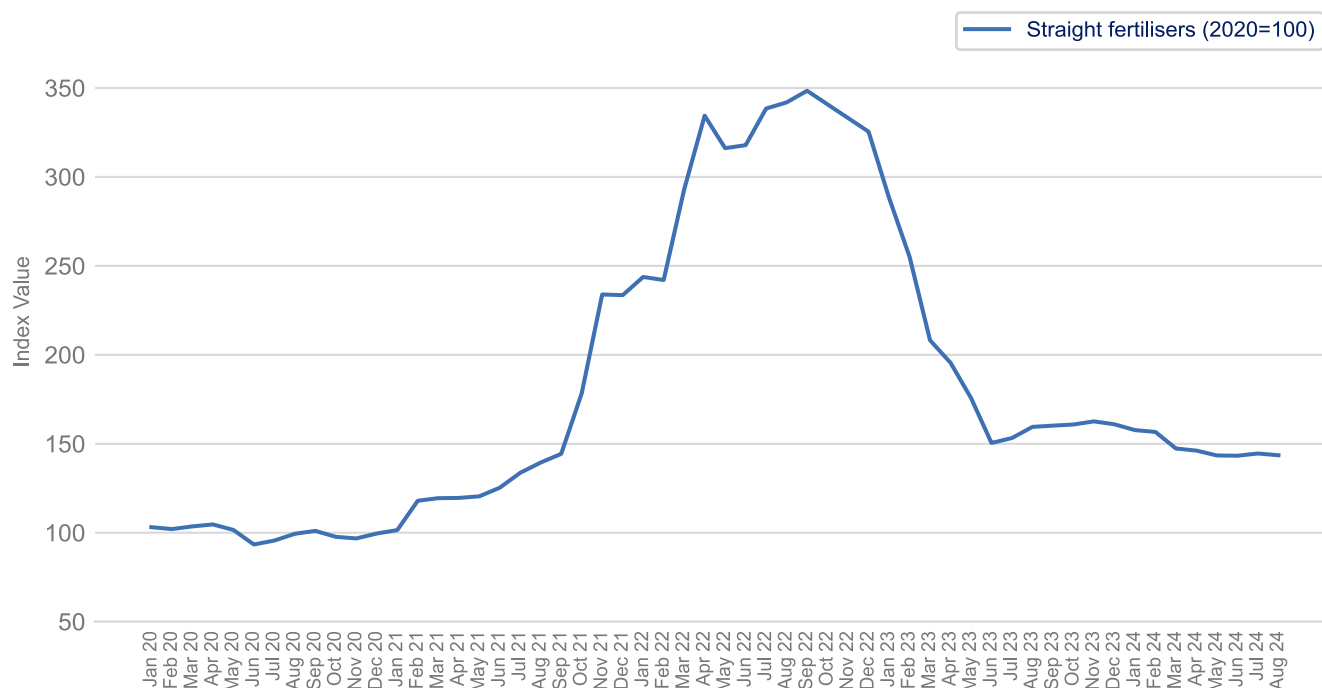
[Back to Title Page](#)

### UK Haulage



Source: Transport Exchange Group

### Straight fertilisers



Source: Department for Environment, Food & Rural Affairs

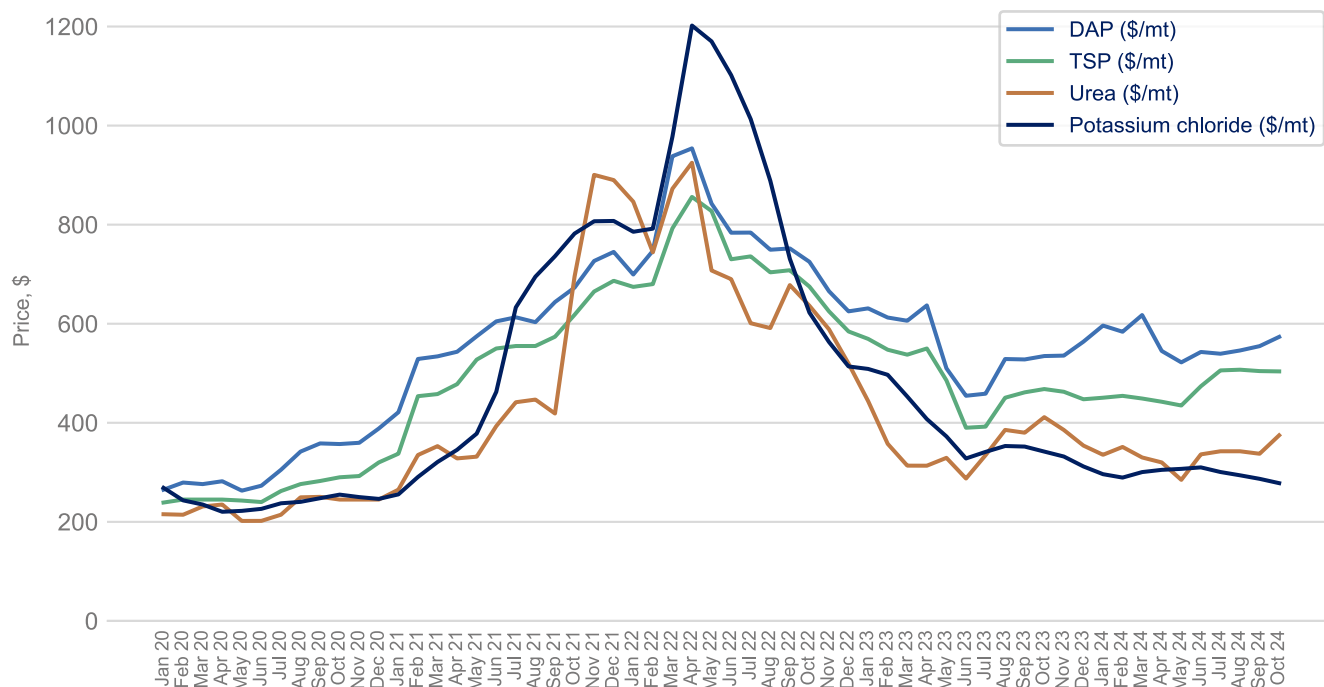
Note: This data is only available to August 2024.

## Prices Dashboard

Data up to October 2024

[Back to Title Page](#)

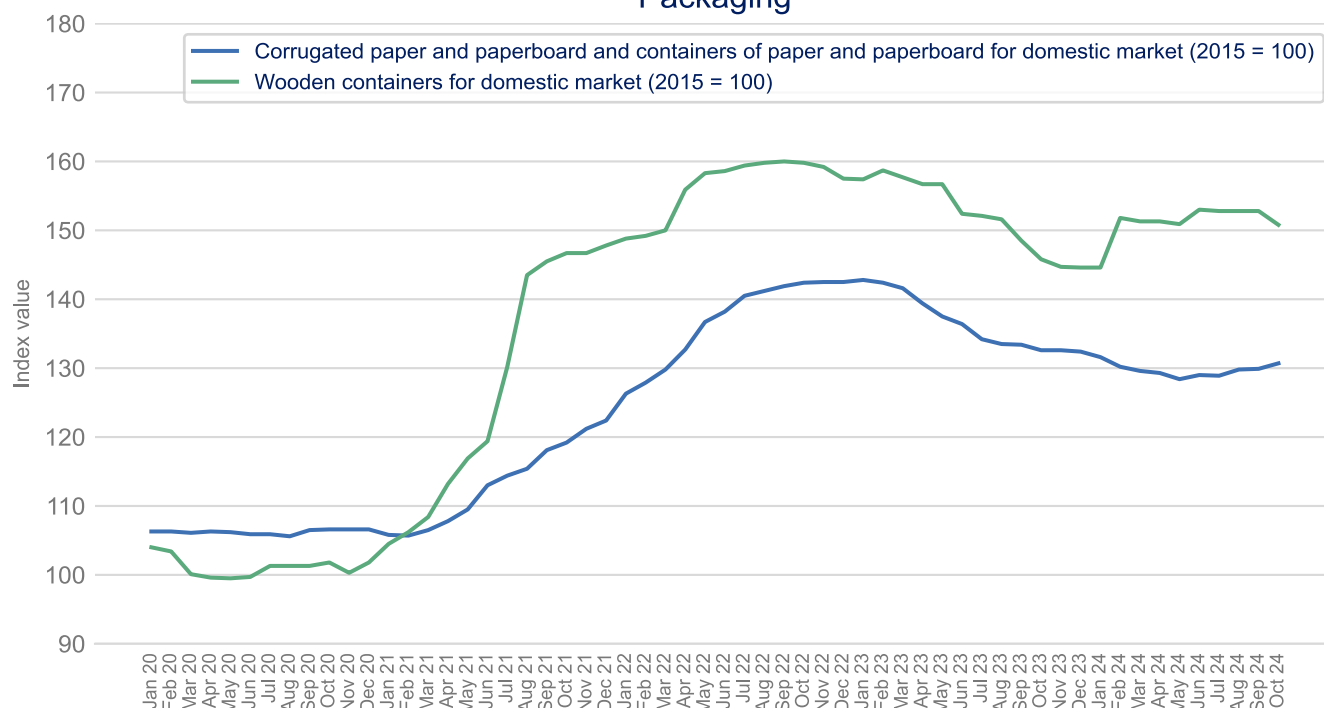
### DAP, TSP, Urea and Potassium Chloride



Source: World Bank Commodity Price Data

### Packaging

#### Packaging

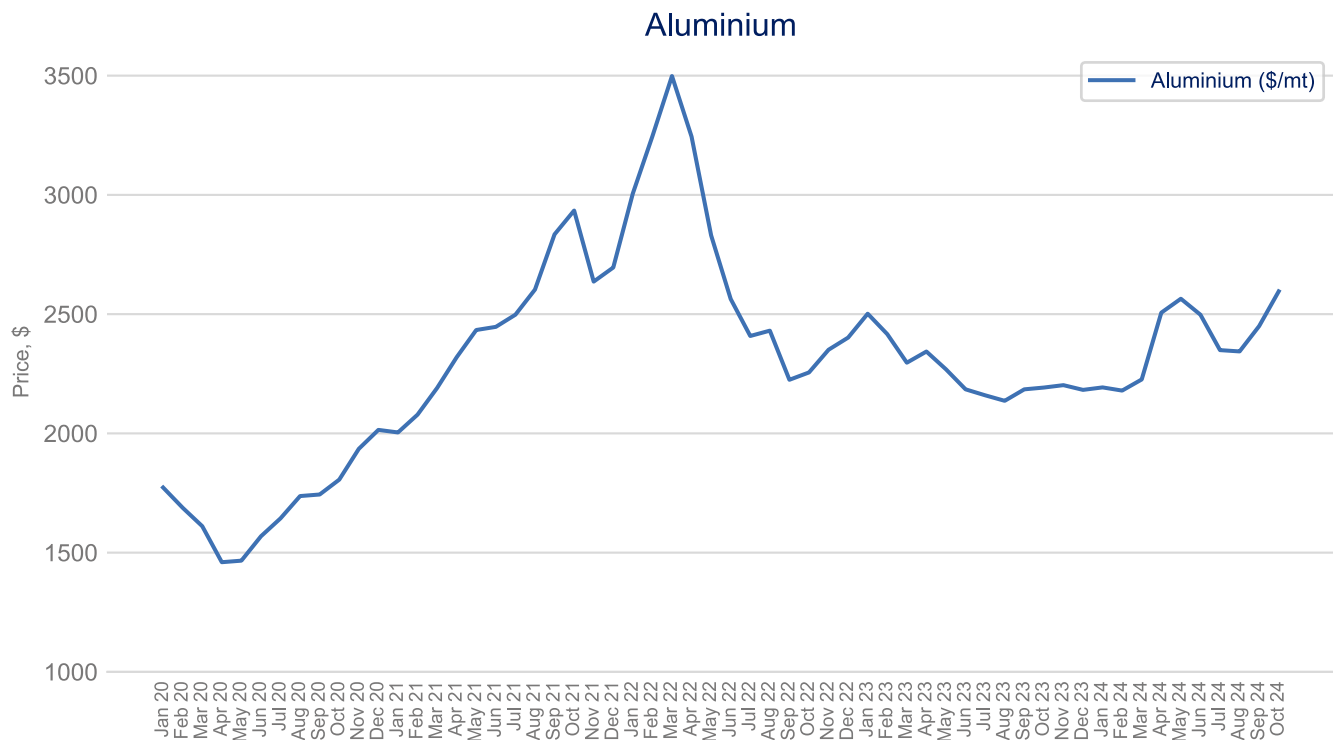


Source: Office for National Statistics

## Prices Dashboard

Data up to October 2024

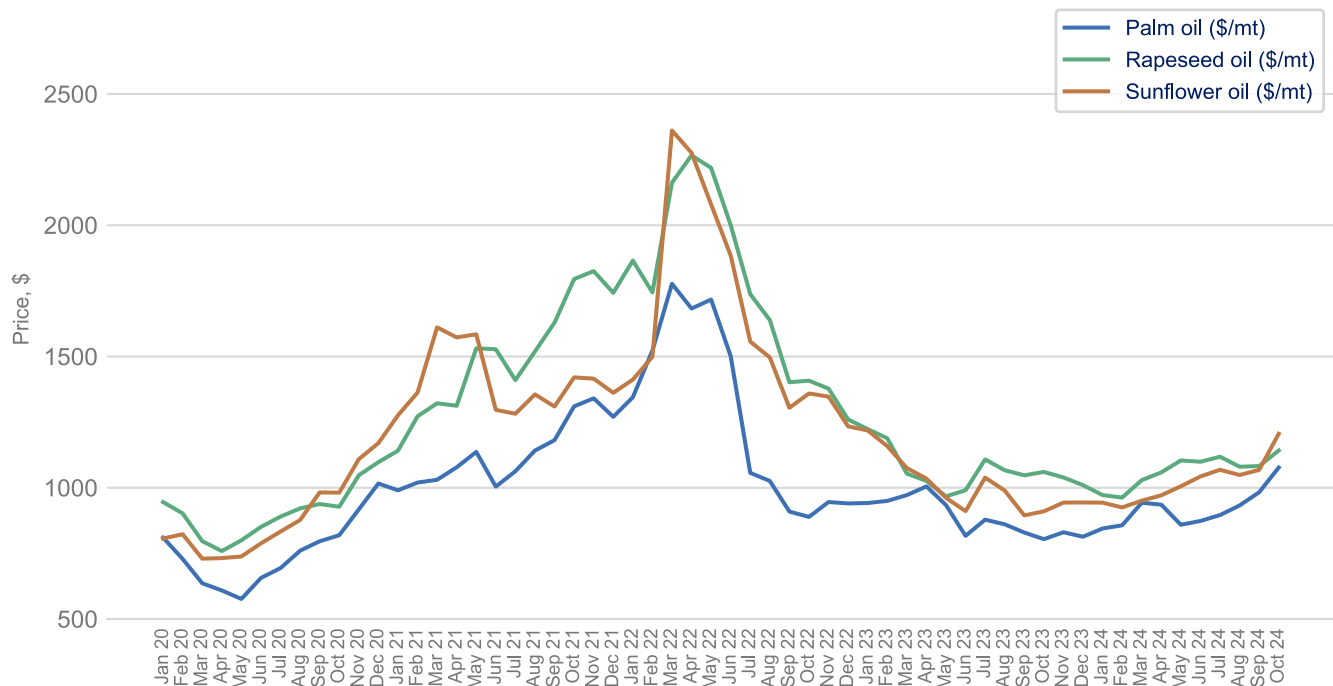
[Back to Title Page](#)



Source: World Bank Commodity Price Data

## Agricultural raw materials

### Palm oil, rapeseed oil and sunflower oil



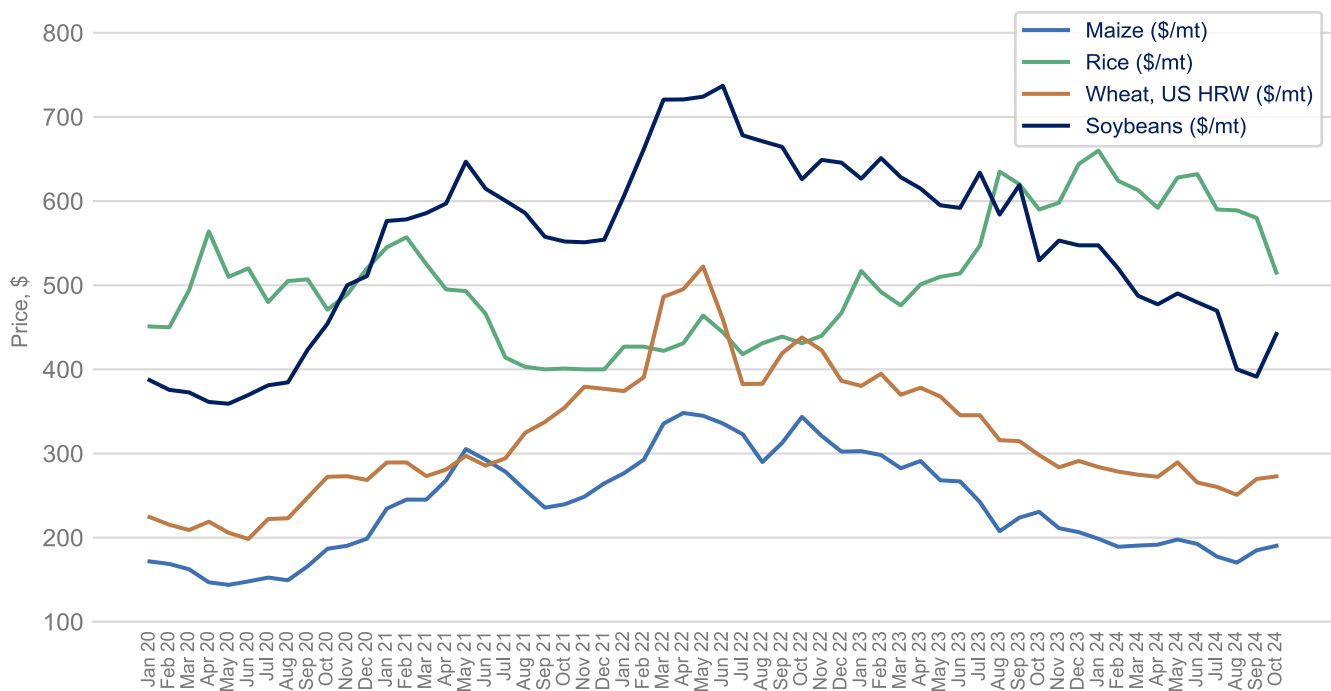
Source: World Bank Commodity Price Data

## Prices Dashboard

Data up to October 2024

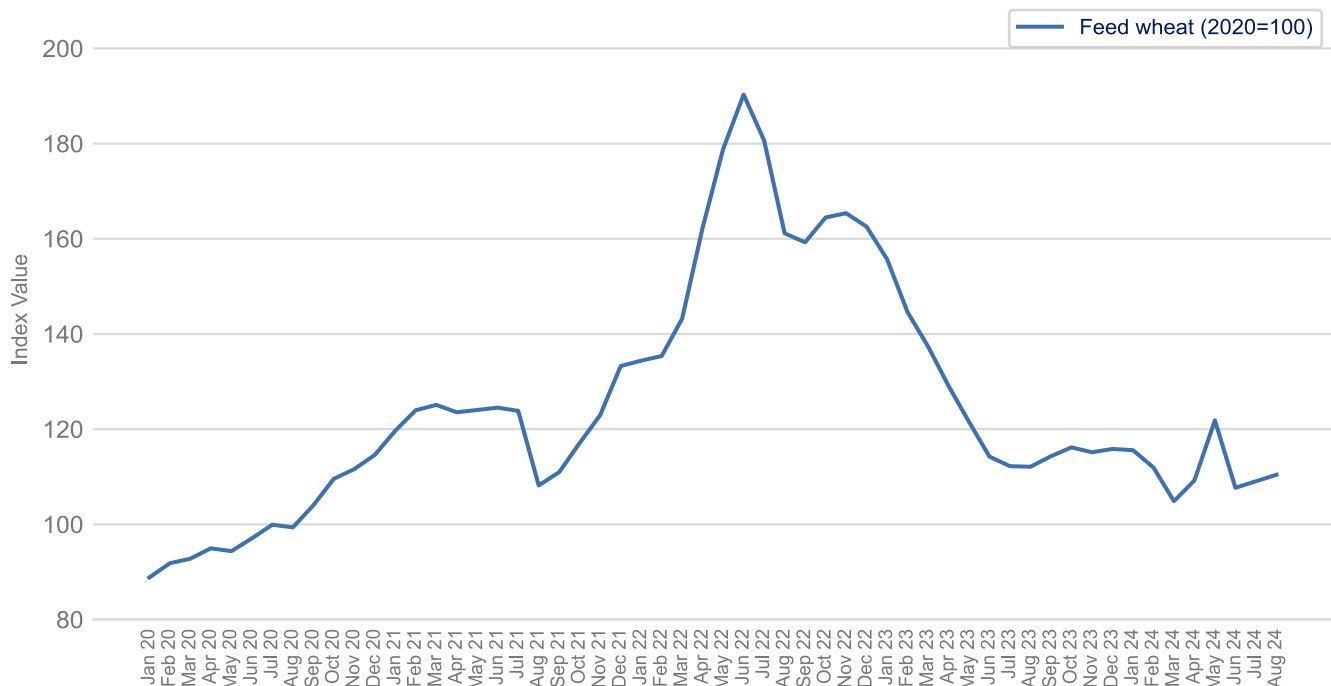
[Back to Title Page](#)

### Maize, rice, wheat and soybeans



Source: World Bank Commodity Price Data

### Feed wheat



Source: Department for Environment, Food & Rural Affairs

Note: This data is only available to August 2024

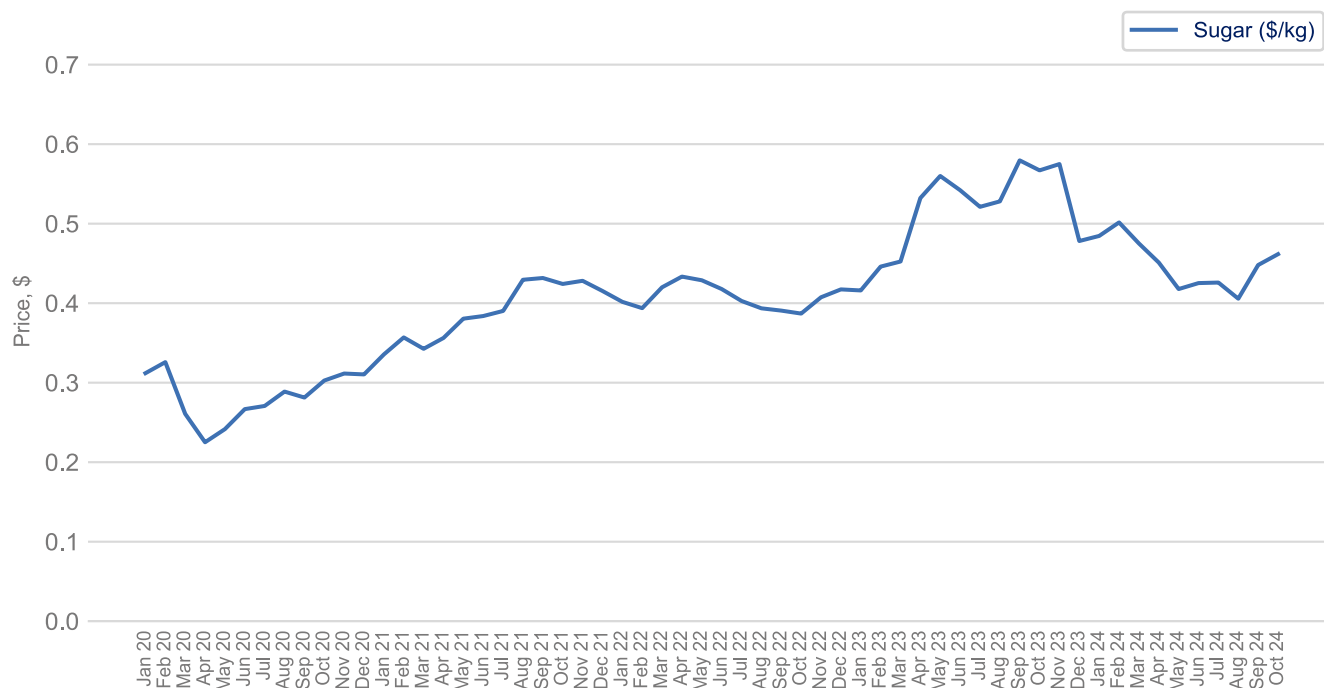


## Prices Dashboard

Data up to October 2024

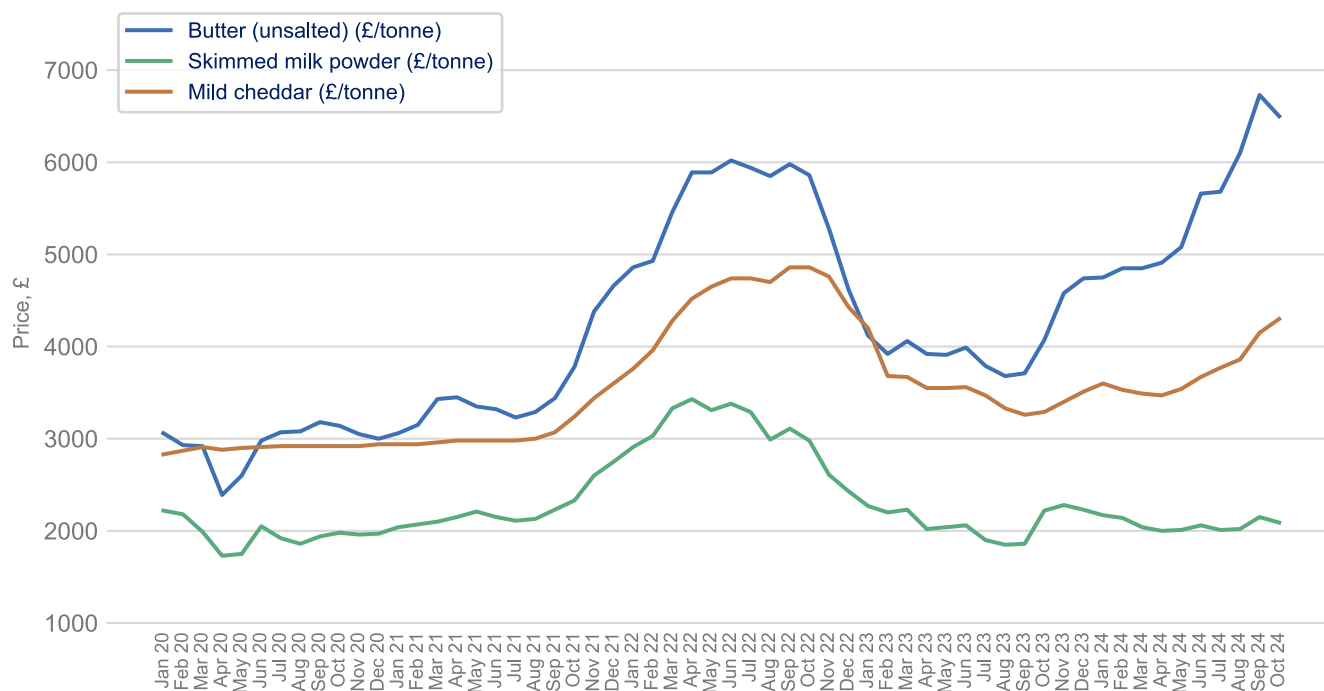
[Back to Title Page](#)

### Sugar



Source: World Bank Commodity Price Data

### Butter, mild cheddar and skimmed milk powder



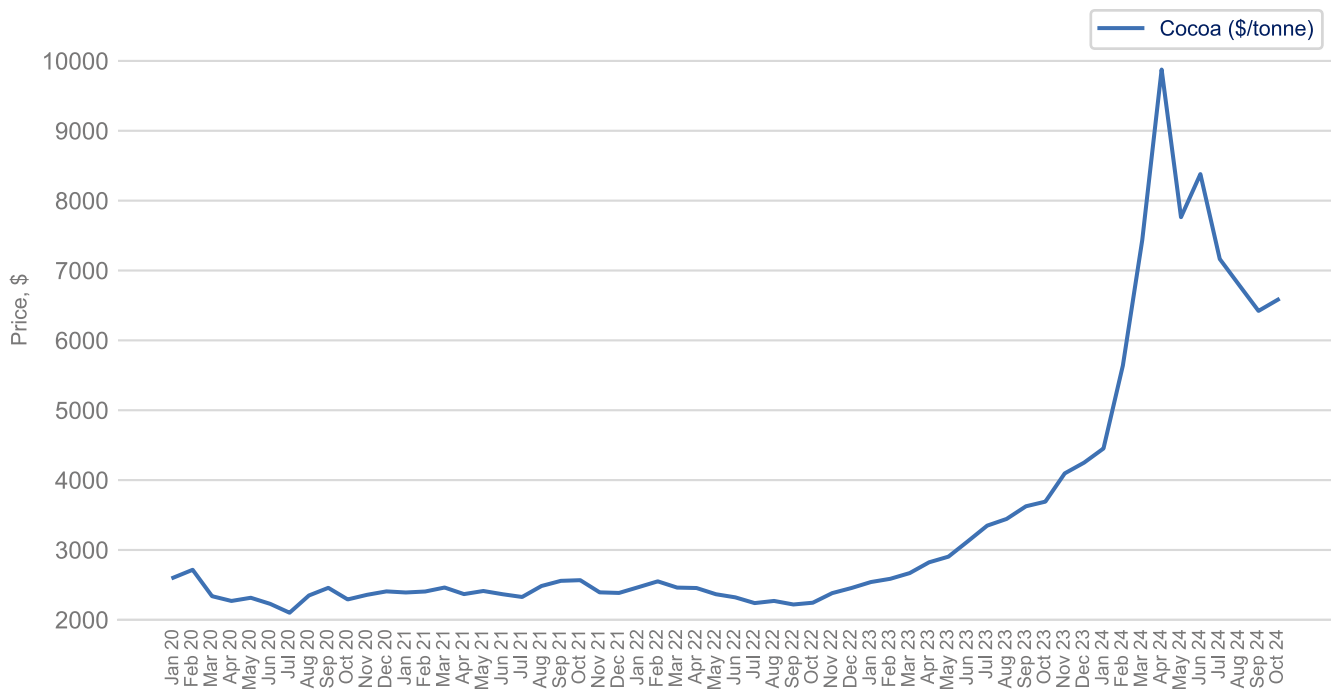
Source: Agriculture and Horticulture Development Board (AHDB)

## Prices Dashboard

Data up to October 2024

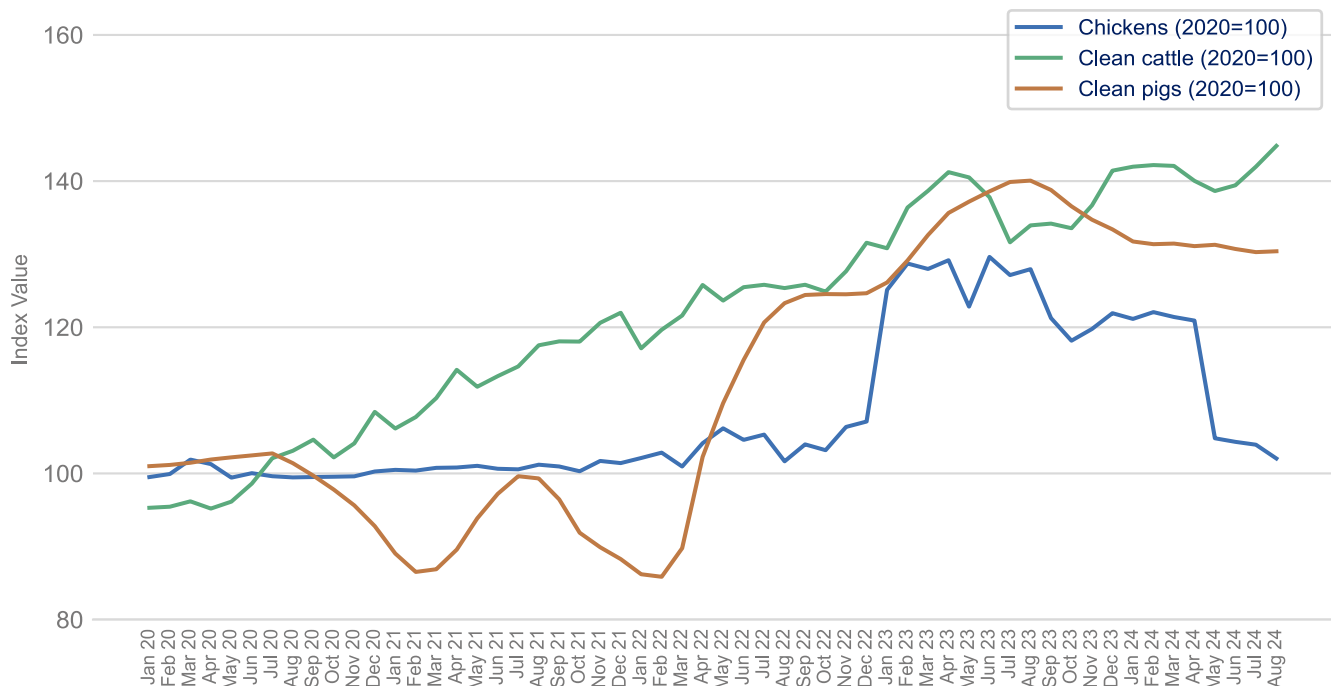
[Back to Title Page](#)

### Cocoa



Source: International Cocoa Organization

### Chicken, beef and pork



Source: Department for Environment, Food & Rural Affairs

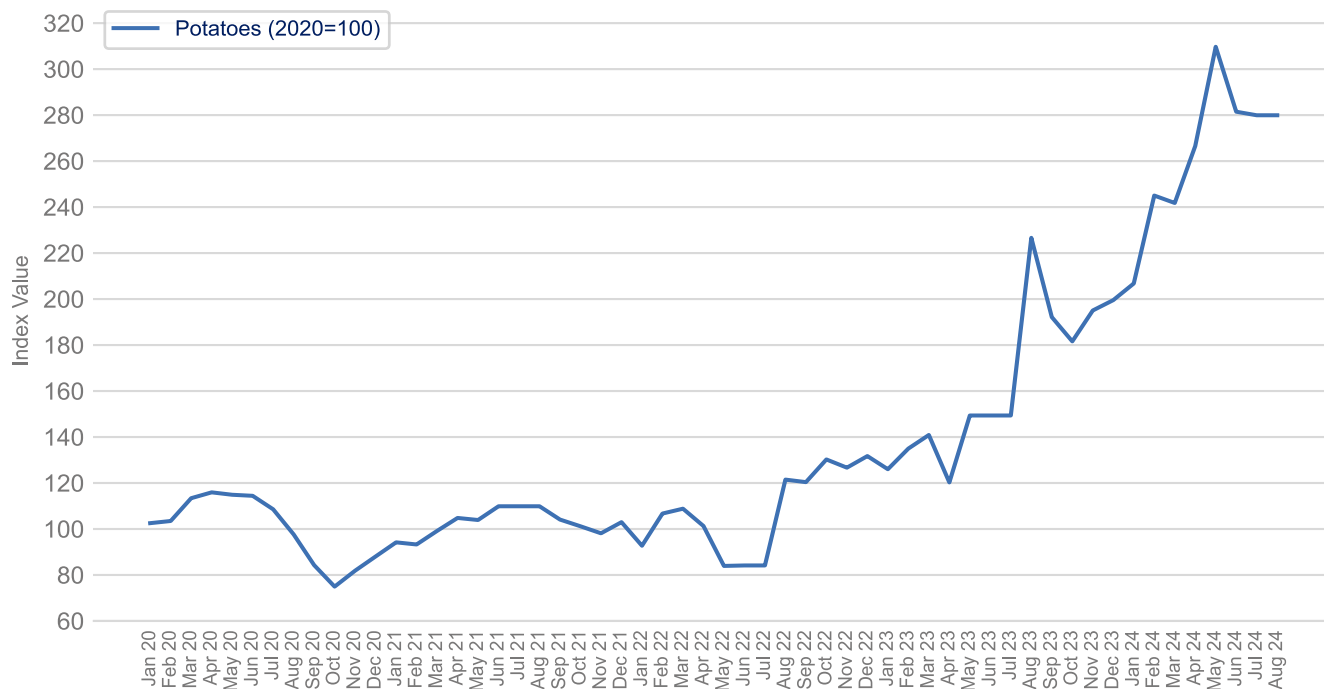
Note: This data is only available to August 2024

## Prices Dashboard

Data up to October 2024

[Back to Title Page](#)

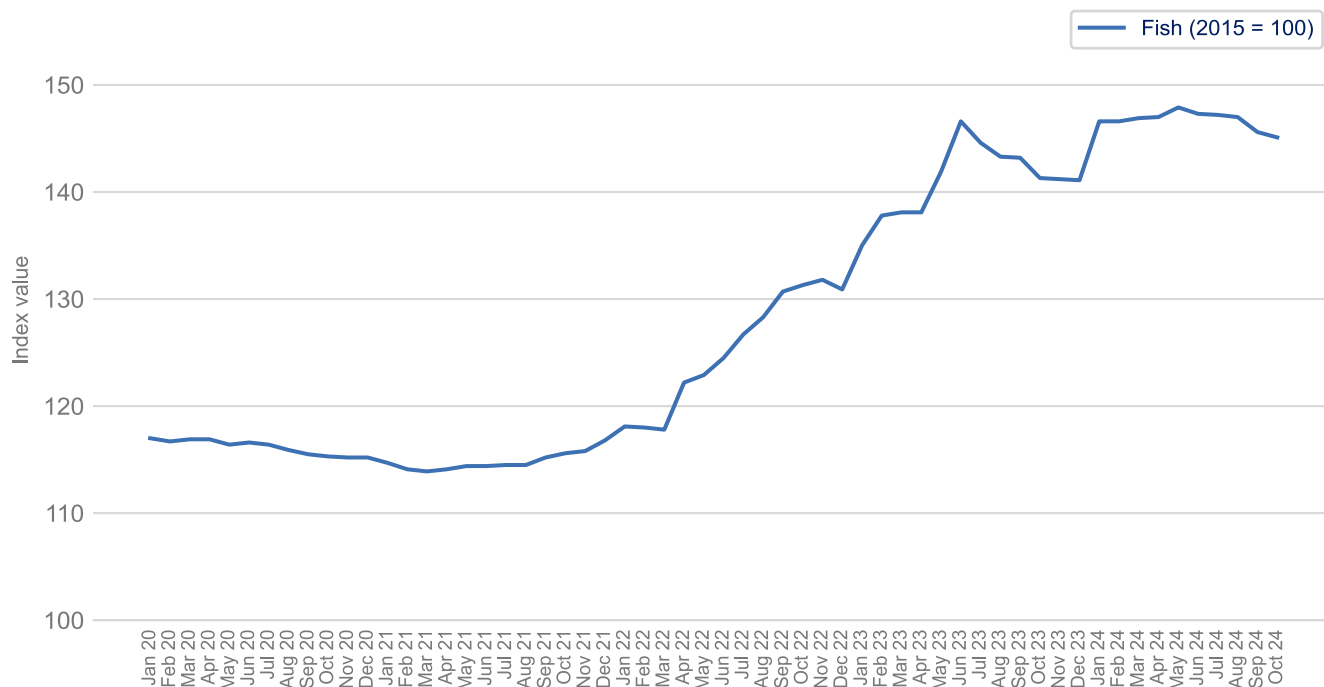
### Potatoes



Source: Department for Environment, Food & Rural Affairs

Note: This data is only available to August 2024

### Preserved and processed fish, crustaceans and molluscs for domestic market



Source: Office for National Statistics

---

## Sources

Agriculture and Horticulture Development Board (AHDB), UK Wholesale Prices

Department for Environment, Food & Rural Affairs, Agricultural Price Indices

Eurostat, HICP - monthly data (annual rate of change)

Freightos, Global Container Freight Index (FBX)

International Cocoa Organization

Office for National Statistics, Consumer Price Inflation & Producer Price Inflation

The World Bank, Commodity Markets, Monthly Prices

Trading Economics, Commodity Prices

Transport Exchange Group, Road Transport Price Index



The Food and Drink Federation (FDF) is the voice of the food and drink manufacturing industry – the UK's largest manufacturing sector. We contribute over £30 billion to the country's economy, supporting half a million jobs in every region and nation, and producing products that are loved in the UK and around the world. [Food and drink powers our nation.](#)

Find out more about our latest news and the work we do at:

[FDF.org.uk](https://www.fdf.org.uk)

X: [@FoodanddrinkFed](#)

[Linkedin](#)