

# FDF Prices Dashboard

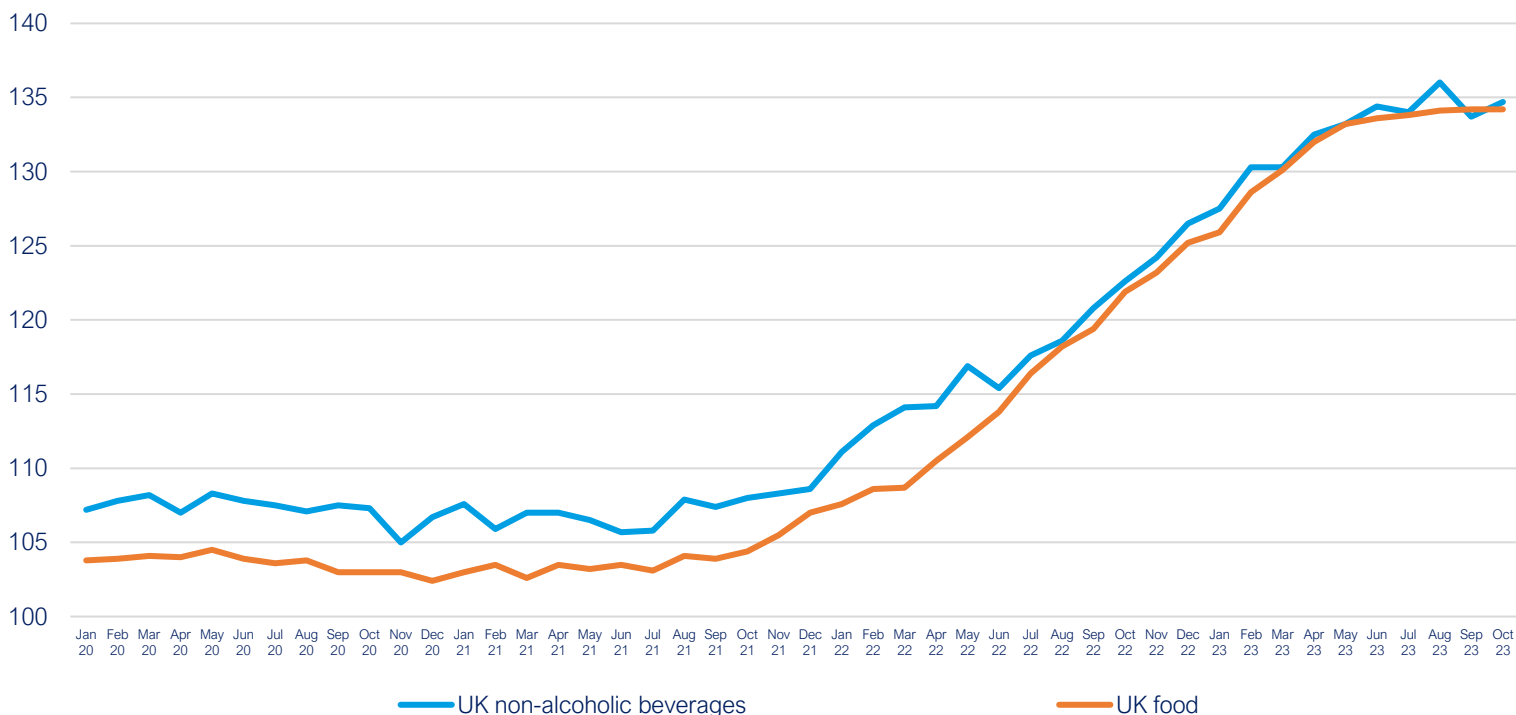
Data up to October 2023

Category		Value	Monthly change, %	Yearly change, %
<b>UK food and non-alcoholic drink inflation (CPIH)</b>				
<a href="#">UK food</a>	Index	134.2	— 0.0%	▲ 10.1%
<a href="#">UK non-alcoholic drink</a>	Index	134.7	▲ 0.8%	▲ 9.9%
<b>UK producer prices (PPI)</b>				
<a href="#">Input prices: domestic food</a>	Index	141.7	▲ 0.7%	▼ - 1.9%
<a href="#">Input prices: imported food</a>	Index	173.6	▲ 0.6%	▲ 9.0%
<a href="#">Output prices: food for domestic market</a>	Index	133.4	▼ - 0.1%	▲ 3.0%
<b>Energy prices and transportation</b>				
<a href="#">Crude oil, brent (\$/bbl)</a>	Price	91	▼ - 3.1%	▼ - 2.2%
<a href="#">Natural gas (\$/mmbtu)</a>	Price	15	▲ 26.2%	▼ - 62.7%
<a href="#">UK natural gas (£/thm)</a>	Price	124	▲ 17.7%	▼ - 58.7%
<a href="#">Shipping container rates</a>	Index	1076.3	▼ - 20.8%	▼ - 69.3%
<a href="#">UK haulage</a>	Index	120.5	▼ - 2.3%	▼ - 5.0%
<a href="#">Fertiliser</a>	Index	159.5	▲ 4.1%	▼ - 53.3%
<b>Packaging</b>				
<a href="#">Paper and paperboard</a>	Index	132.0	▼ - 1.0%	▼ - 7.3%
<a href="#">Wooden containers</a>	Index	145.9	▼ - 1.0%	▼ - 1.8%
<a href="#">Aluminium (\$/mt)</a>	Price	2,192	▲ 0.3%	▼ - 2.8%
<b>Agricultural raw materials</b>				
<a href="#">Sunflower oil (\$/mt)</a>	Price	910	▲ 1.7%	▼ - 33.0%
<a href="#">Rapeseed oil (\$/mt)</a>	Price	1,060	▲ 1.2%	▼ - 24.7%
<a href="#">Palm oil (\$/mt)</a>	Price	804	▼ - 3.1%	▼ - 9.5%
<a href="#">Wheat, US HRW (\$/mt)</a>	Price	298	▼ - 5.3%	▼ - 31.9%
<a href="#">Maize (\$/mt)</a>	Price	231	▲ 3.1%	▼ - 32.9%
<a href="#">Rice (\$/mt)</a>	Price	590	▼ - 4.8%	▲ 36.9%
<a href="#">Soybeans (\$/mt)</a>	Price	530	▼ - 14.5%	▼ - 15.4%
<a href="#">Feed wheat (UK)</a>	Index	112	▼ - 0.1%	▼ - 30.4%
<a href="#">Sugar (\$/kg)</a>	Price	0.57	▼ - 2.2%	▲ 46.6%
<a href="#">Cheese (£/tonne)</a>	Price	3,290	▲ 0.9%	▼ - 32.3%
<a href="#">Butter (£/tonne)</a>	Price	4,070	▲ 9.7%	▼ - 30.5%
<a href="#">Skimmed milk powder (£/tonne)</a>	Price	2,220	▲ 19.4%	▼ - 25.5%
<a href="#">Eggs (UK)</a>	Index	166.3	— 0.0%	▲ 37.4%
<a href="#">Beef (UK)</a>	Index	133.9	▲ 1.8%	▲ 6.8%
<a href="#">Chicken (UK)</a>	Index	128.0	▲ 0.6%	▲ 25.9%
<a href="#">Pork (UK)</a>	Index	140.1	▲ 0.1%	▲ 13.6%
<a href="#">Potatoes (UK)</a>	Index	226.6	▲ 51.7%	▲ 86.6%
<a href="#">Fish (UK)</a>	Index	143.0	▼ - 1.3%	▲ 7.6%

[Back to Title Page](#)

## UK food and non-alcoholic drink inflation (CPIH)

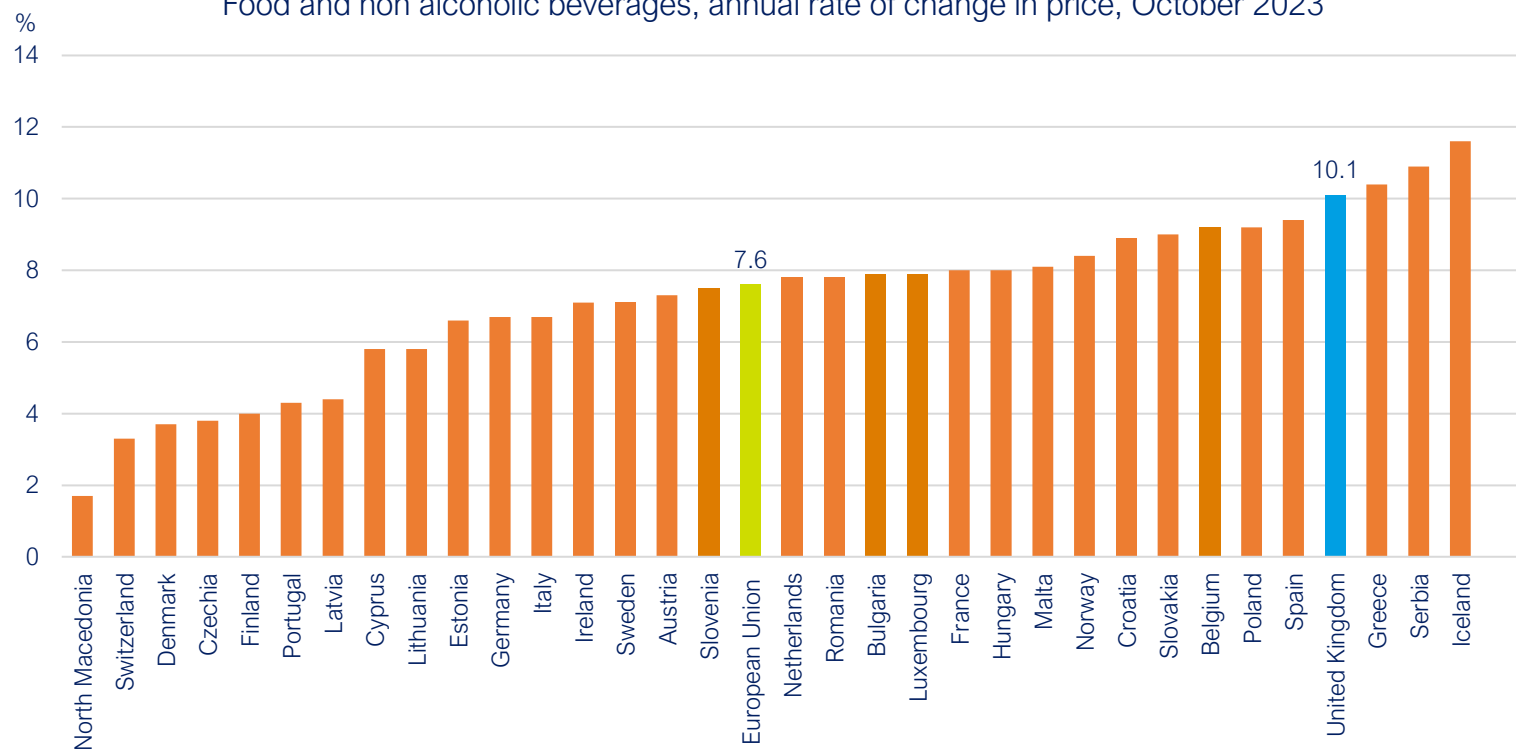
UK food and UK non-alcoholic beverages, 2015=100



Source: Office for National Statistics

## Food and drink inflation comparison with Europe

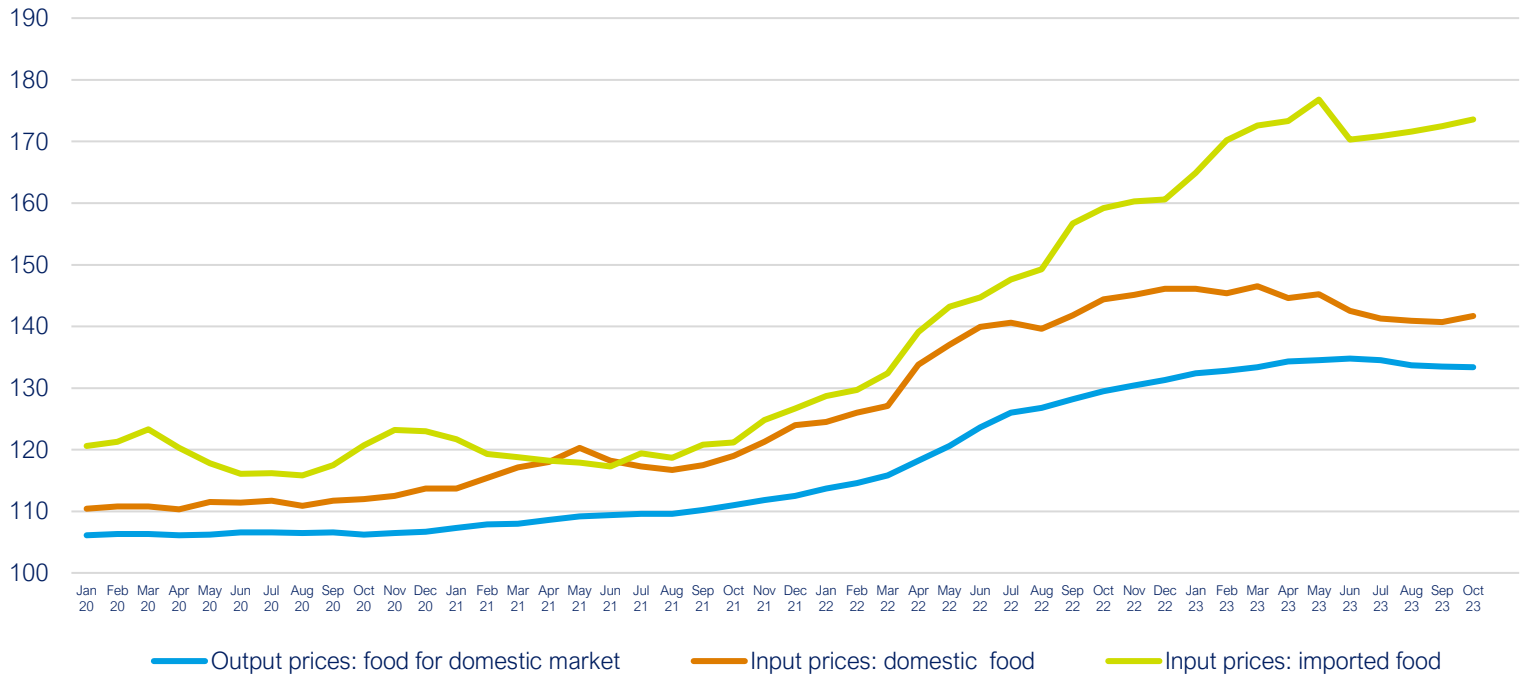
Food and non alcoholic beverages, annual rate of change in price, October 2023



Source: Eurostat

## UK producer prices (PPI)

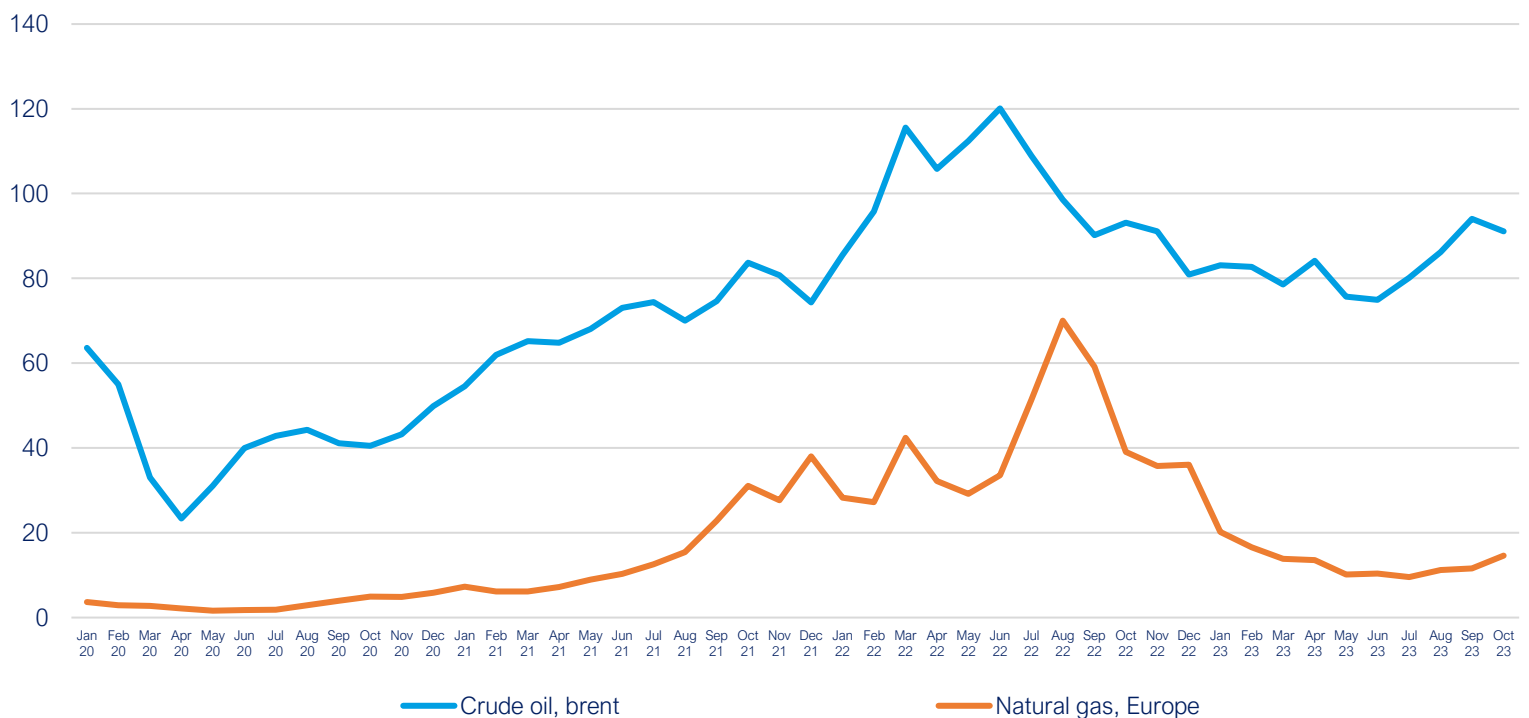
Input prices (domestic food), input prices (imported food), output prices (food for domestic market), 2015 = 100



Source: Office for National Statistics

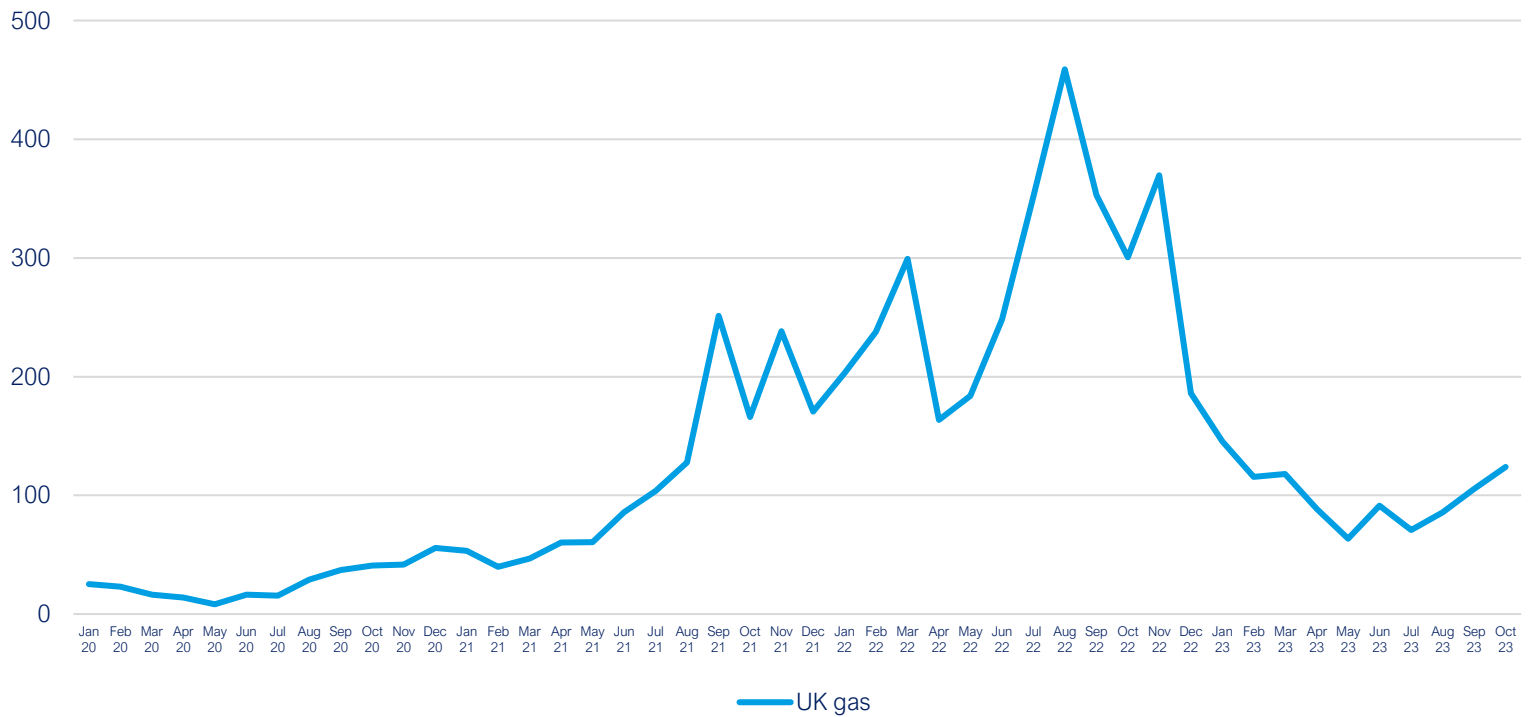
## Energy prices and transportation

Crude oil (\$/bbl) and natural gas (\$/mmbtu)



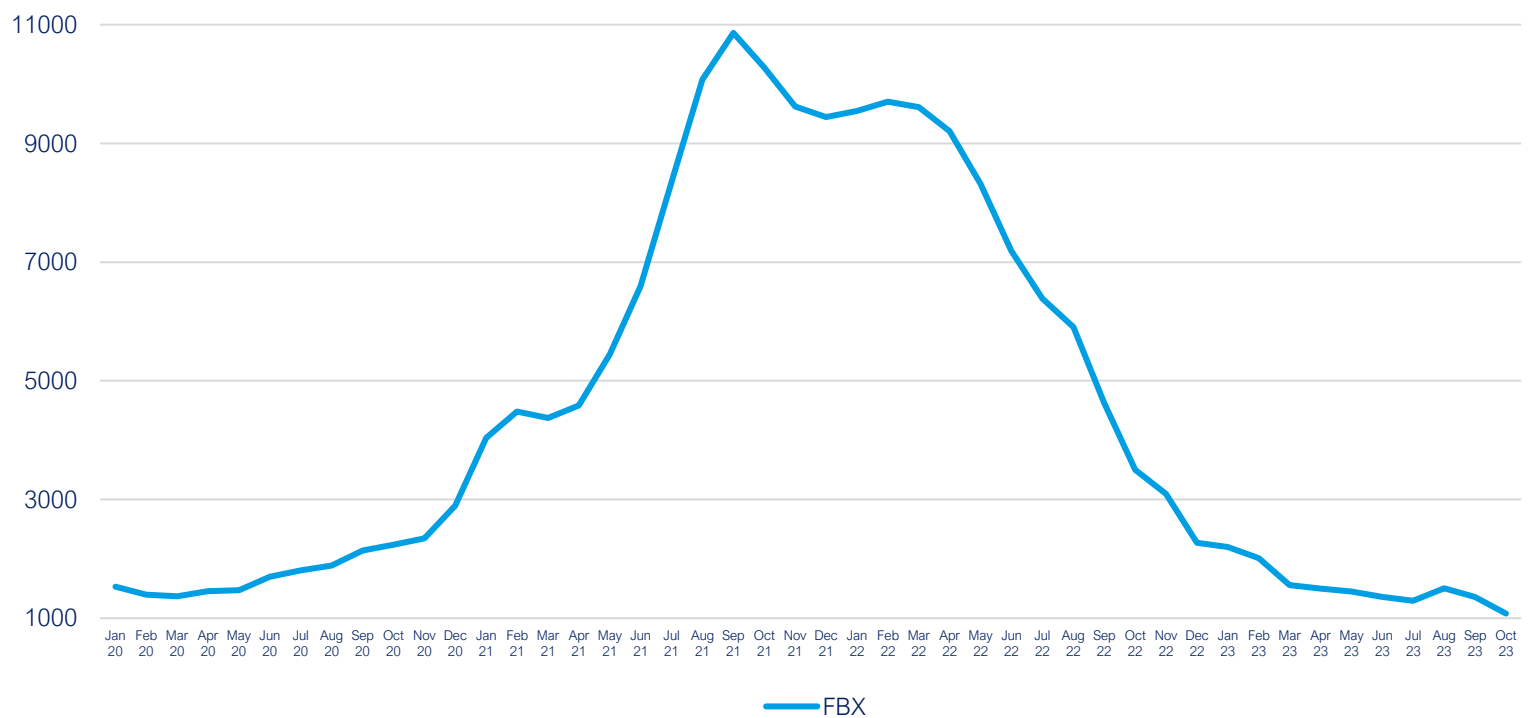
Source: World Bank Commodity Price Data

UK natural gas (£/thm)



Source: Trading Economics

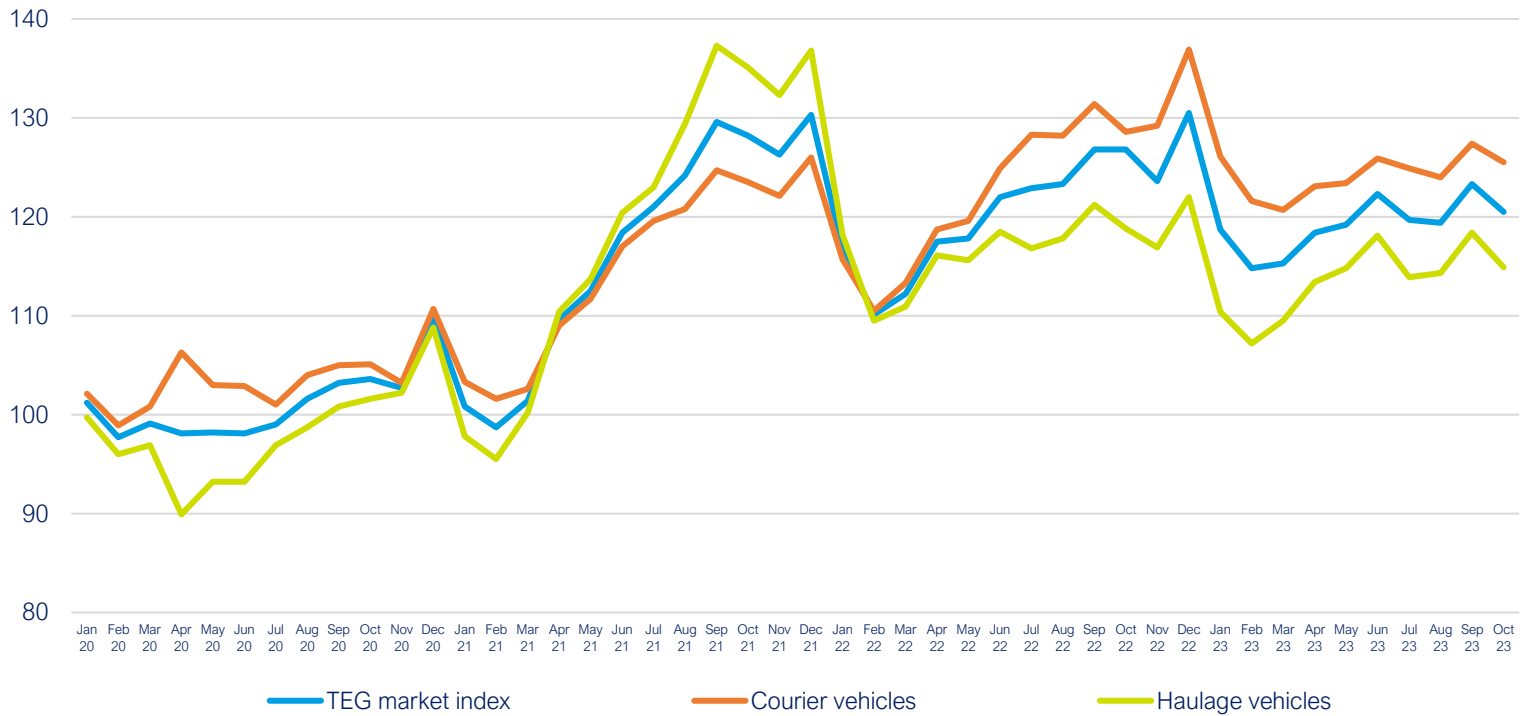
Freightos Baltic Index (FBX): Global Container Freight Index



Source: Freightos, Global Container Index

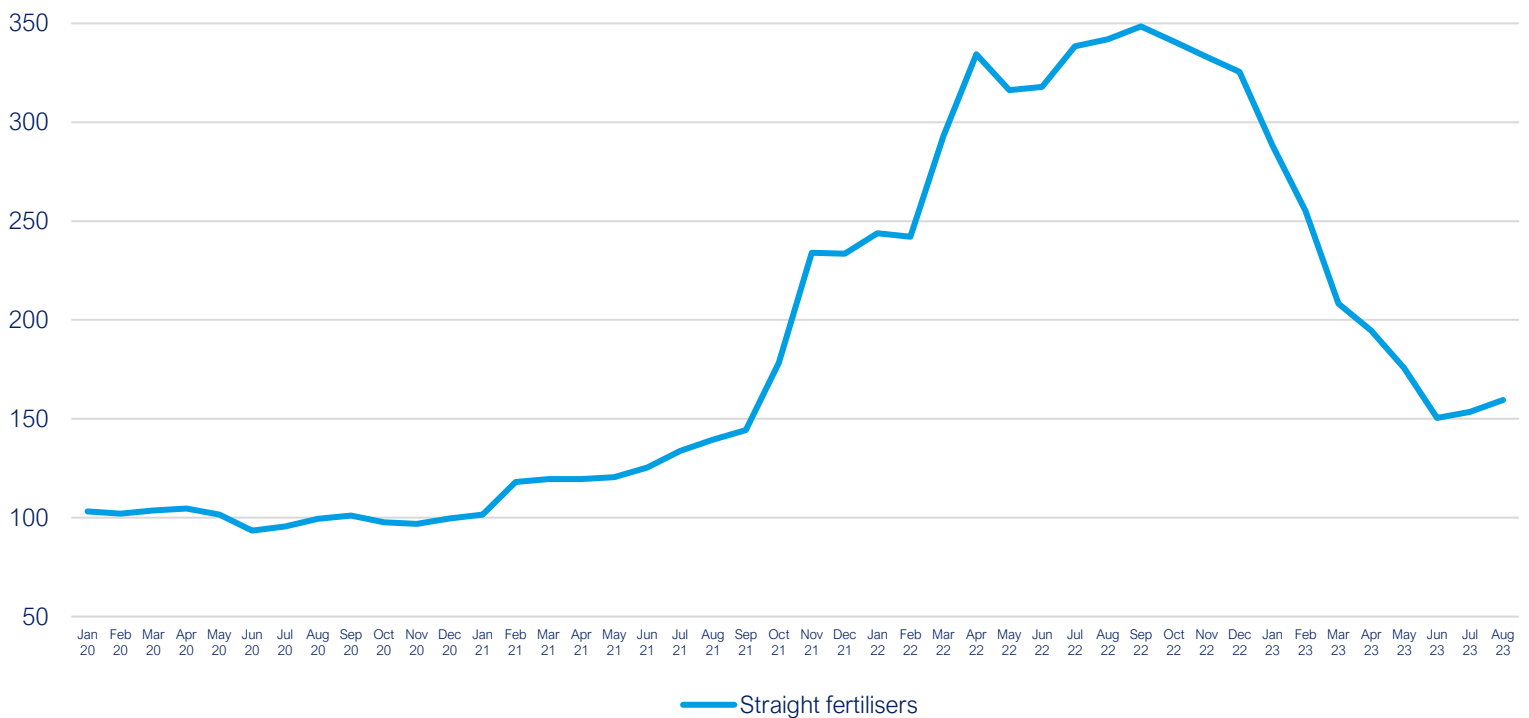
Note: Each monthly index value is an average of the weekly index values of that month

UK haulage, Jan 2019 = 100



Source: Transport Exchange Group

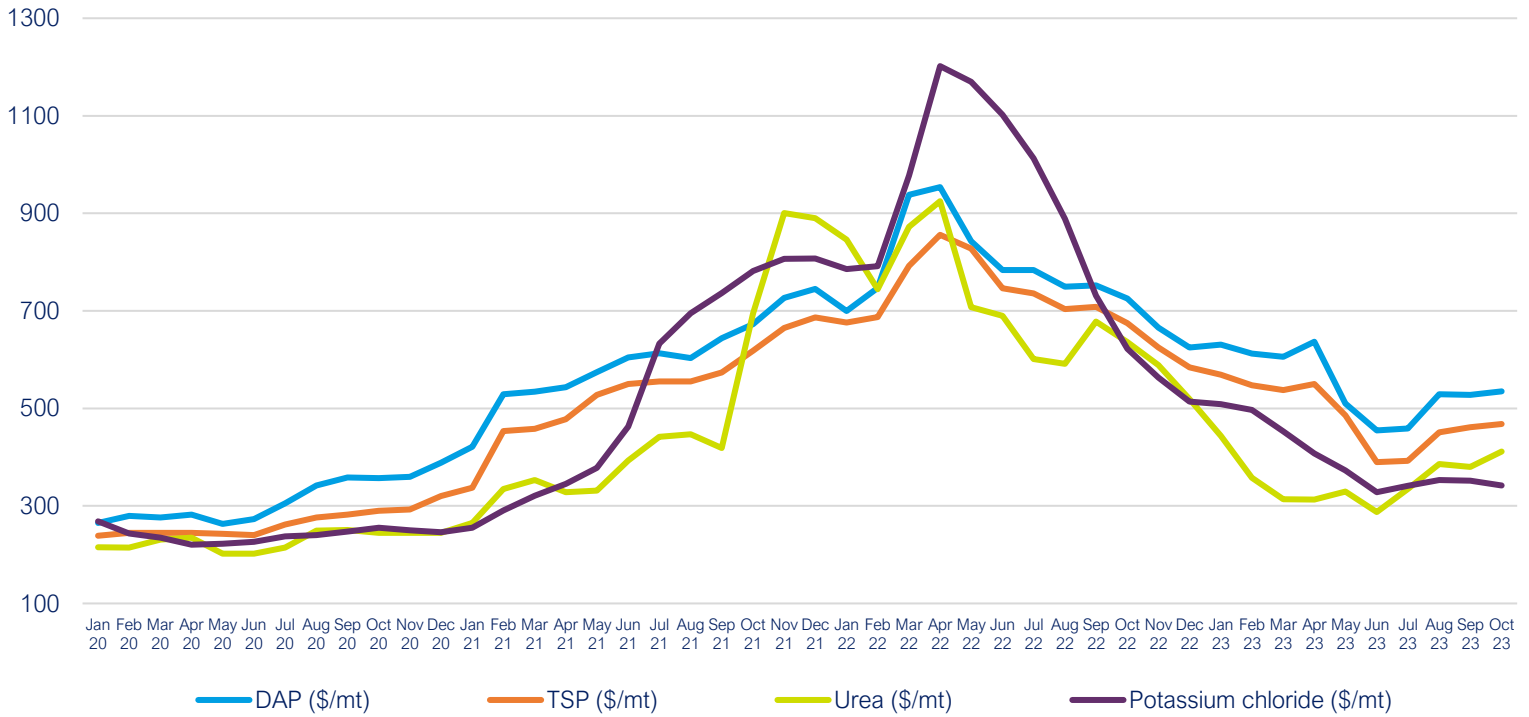
Straight fertilisers, 2020 = 100



Source: Department for Environment, Food & Rural Affairs

Note: This data is only available to August 2023.

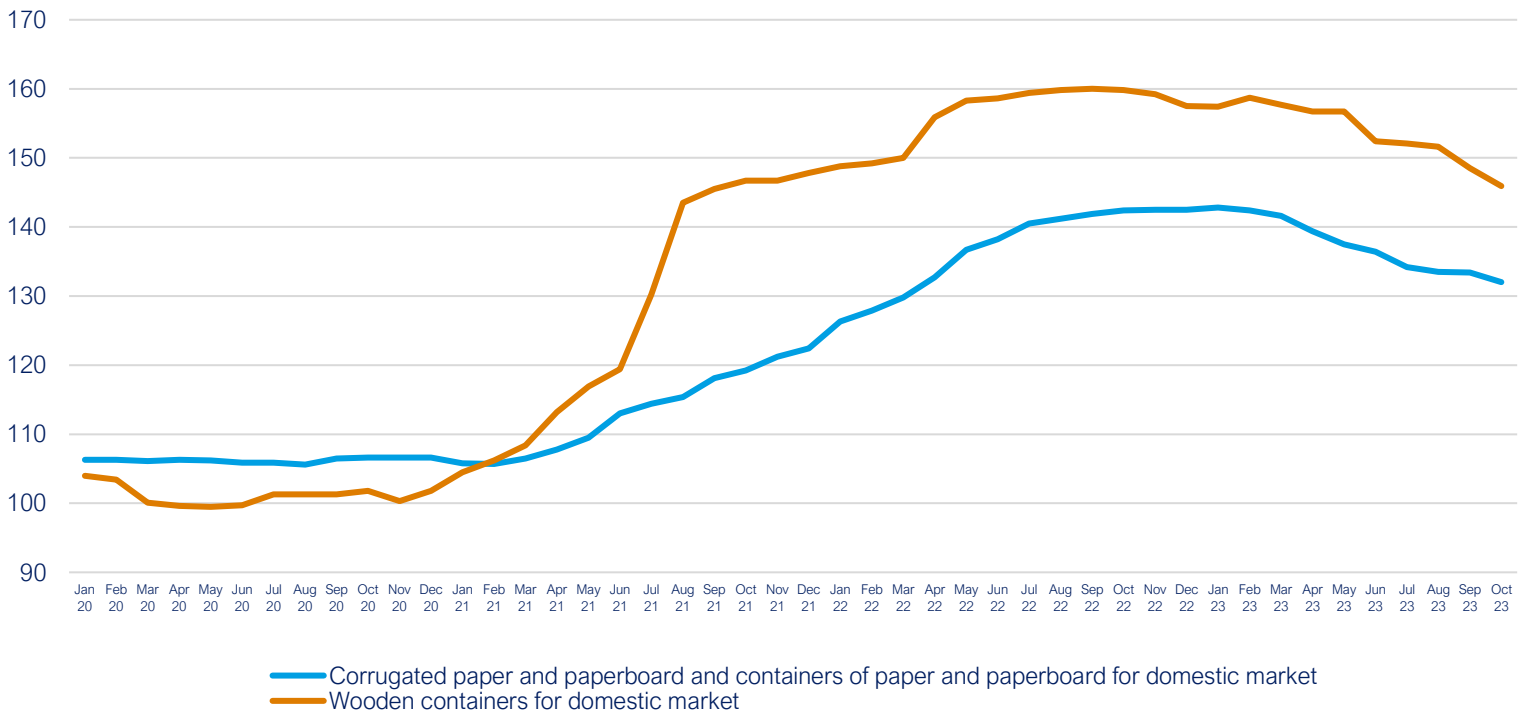
DAP, TSP, Urea, Potassium Chloride, (\$/mt)



Source: World Bank Commodity Price Data

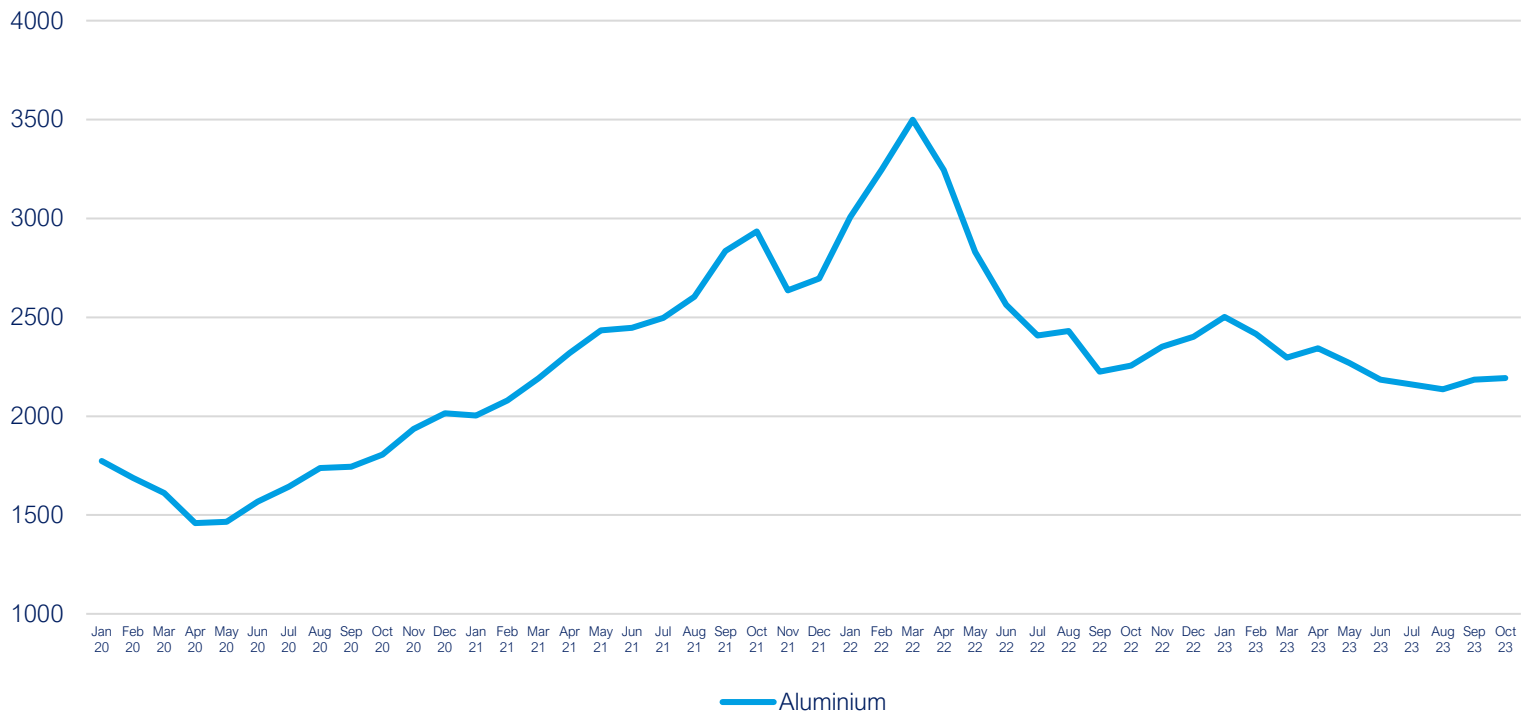
## Packaging

Packaging, 2015 = 100



Source: Office for National Statistics

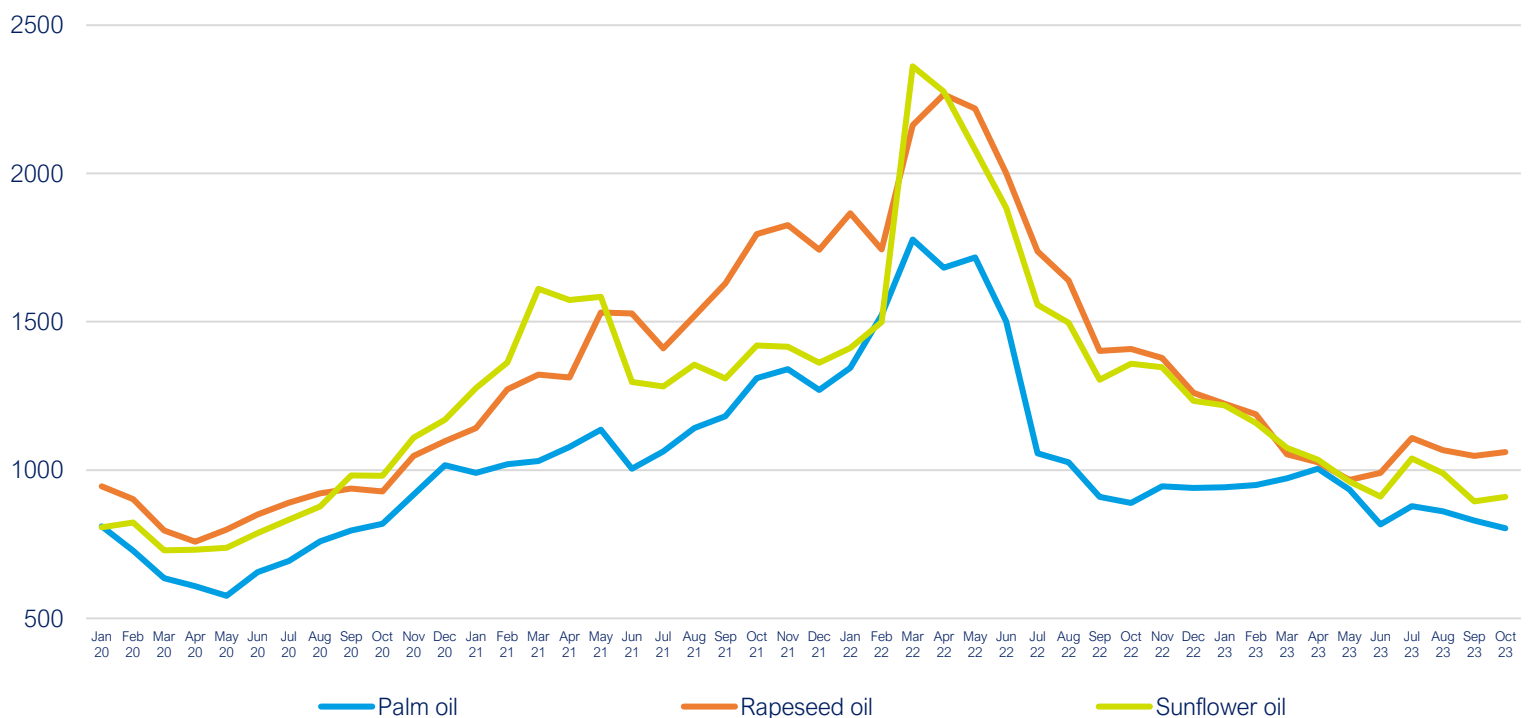
## Aluminium (\$/mt)



Source: World Bank Commodity Price Data

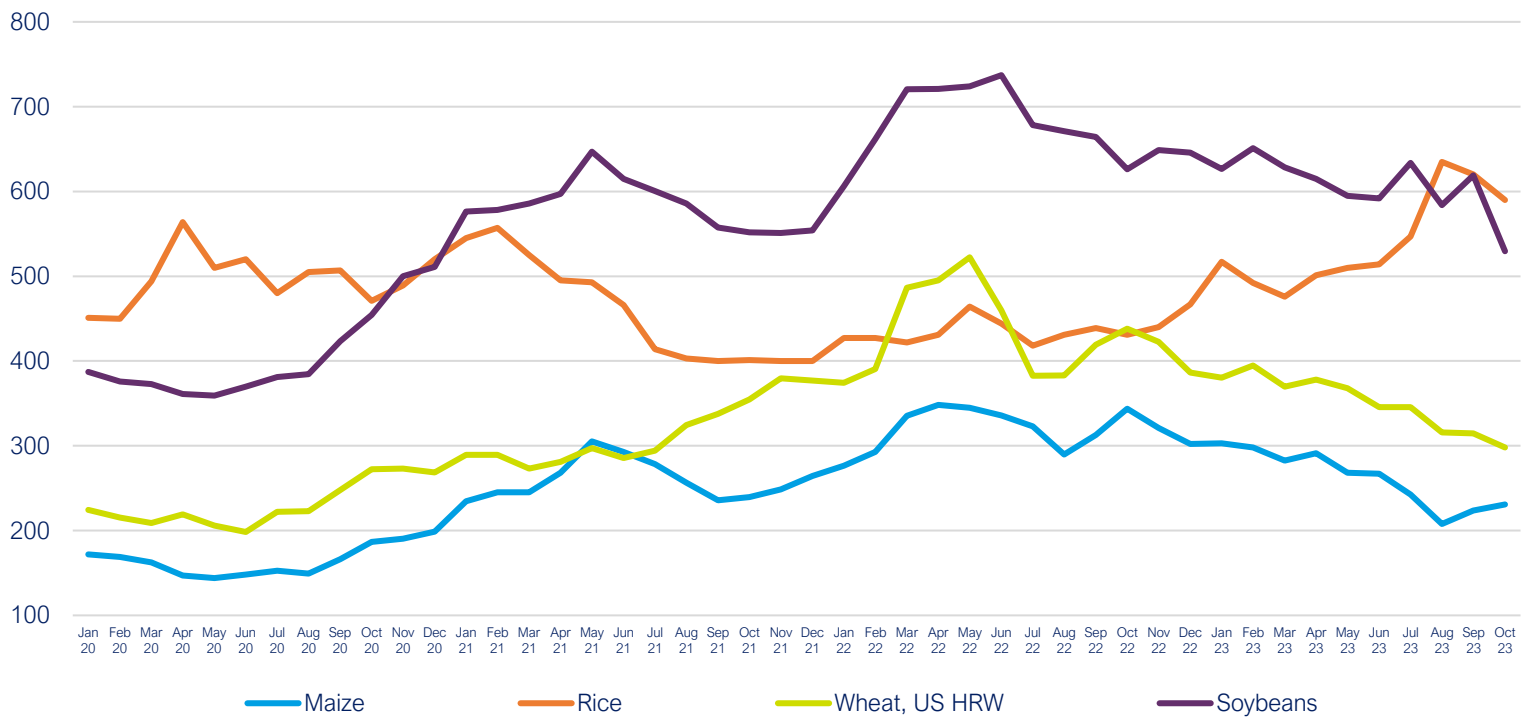
## Agricultural raw materials

### Palm oil, rapeseed oil and sunflower oil (\$/mt)



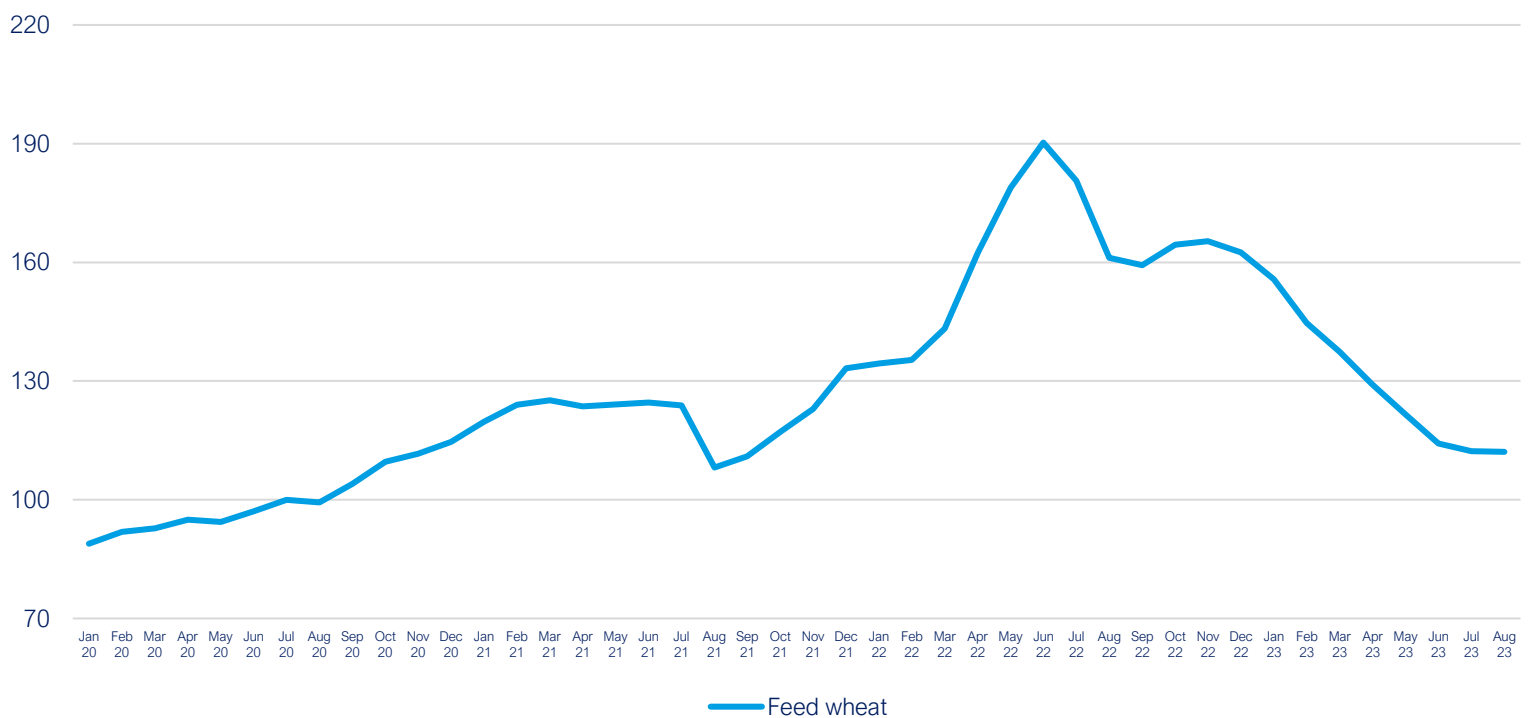
Source: World Bank Commodity Price Data

Maize, rice, wheat and soybeans (\$/mt)



Source: World Bank Commodity Price Data

Feed wheat, 2020 = 100



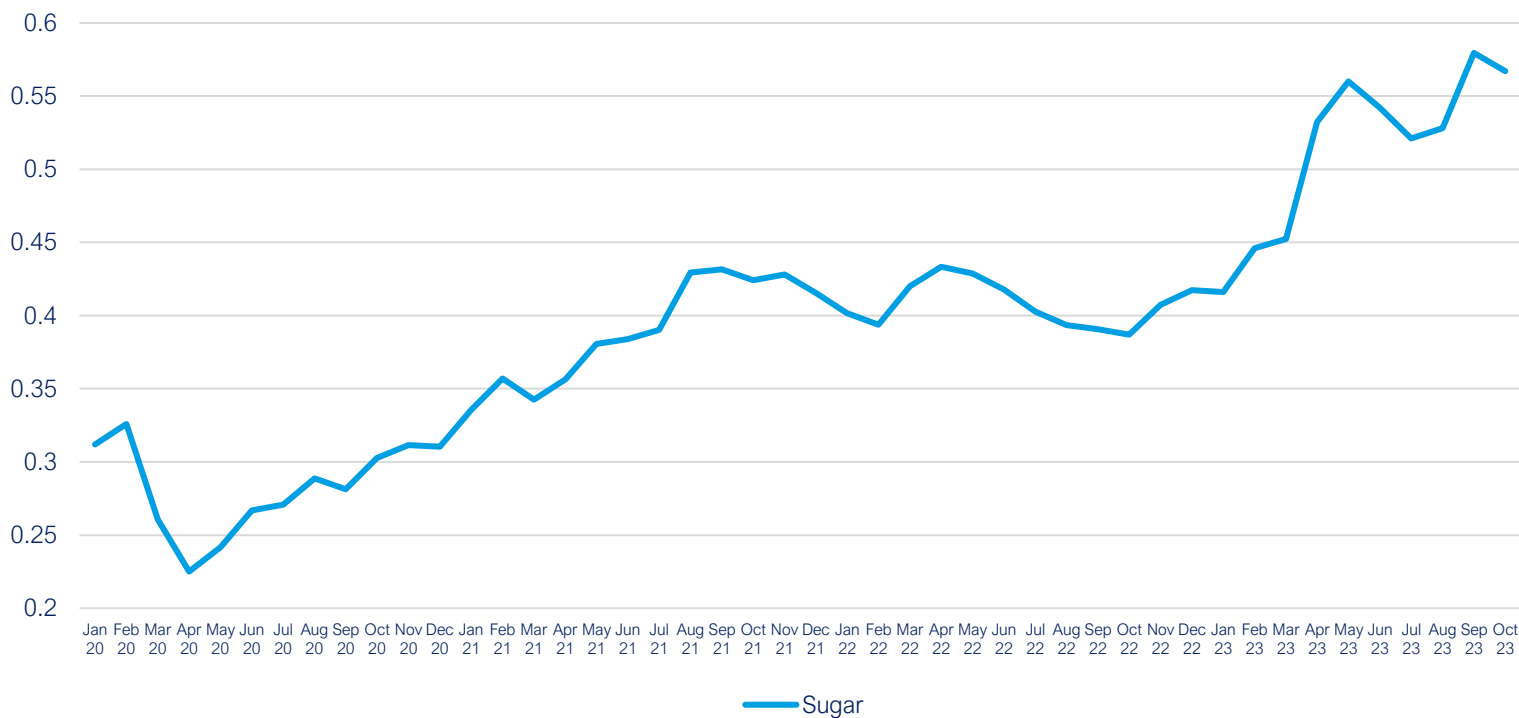
Source: Department for Environment, Food & Rural Affairs

Note: This data is only available to August 2023



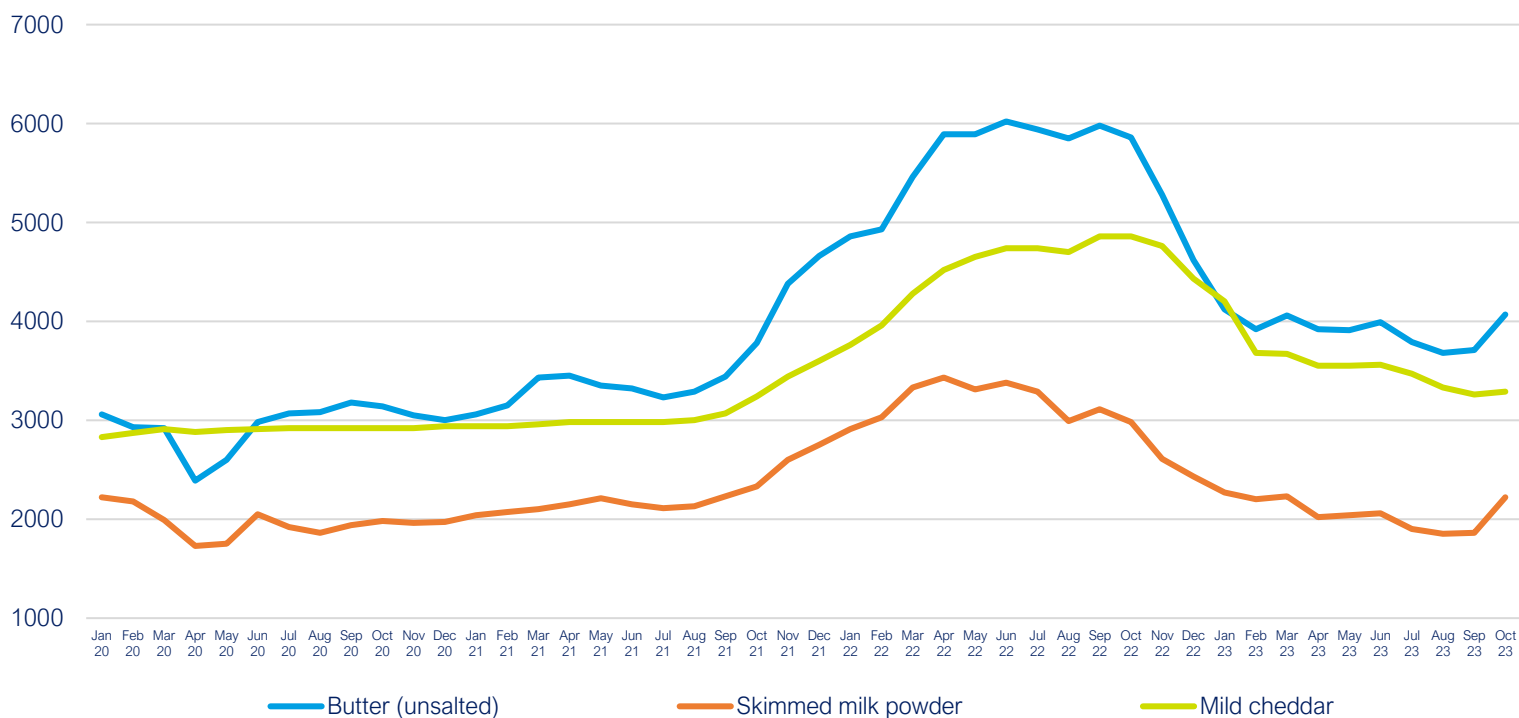
[Back to Title Page](#)

## Sugar (\$/kg)



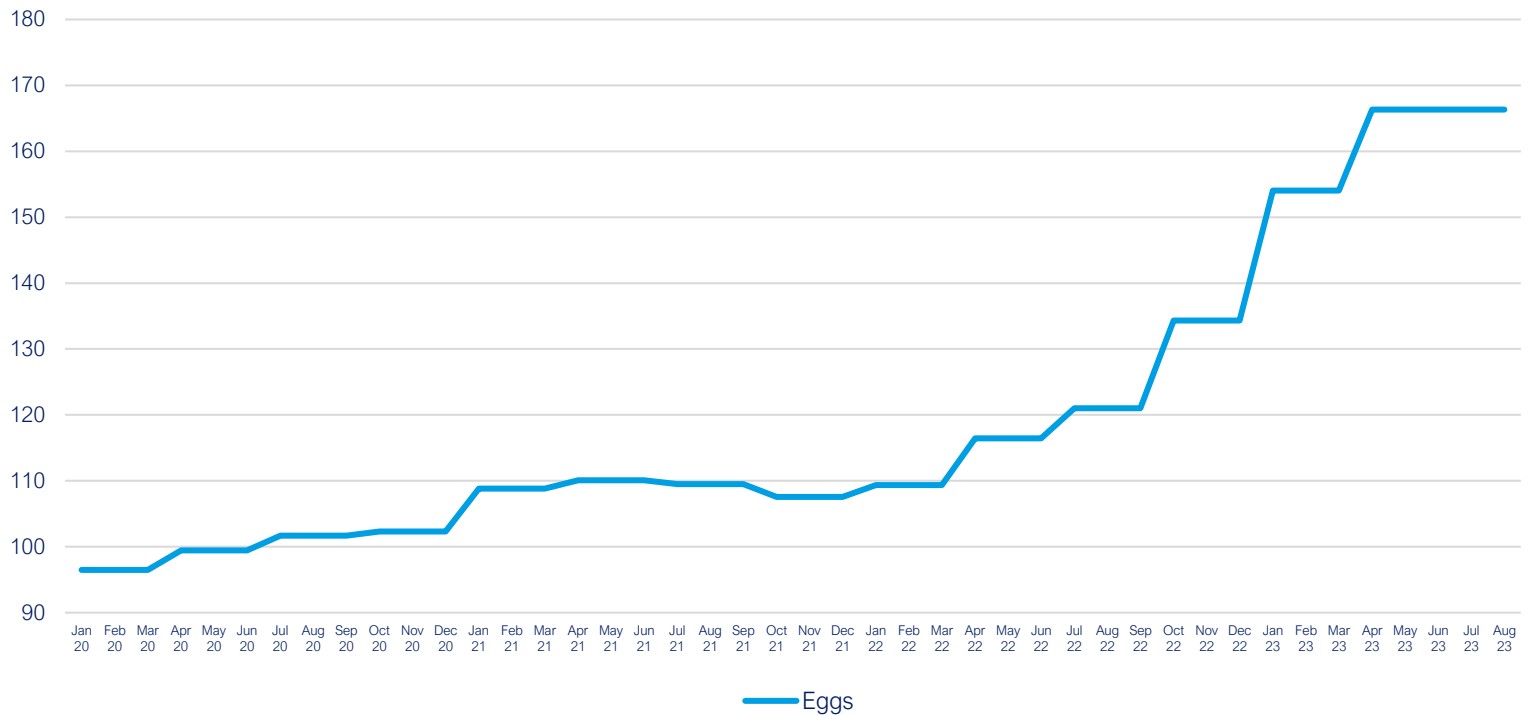
Source: World Bank Commodity Price Data

## Butter, mild cheddar and skimmed milk powder (£/tonne)



Source: Agriculture and Horticulture Development Board (AHDB)

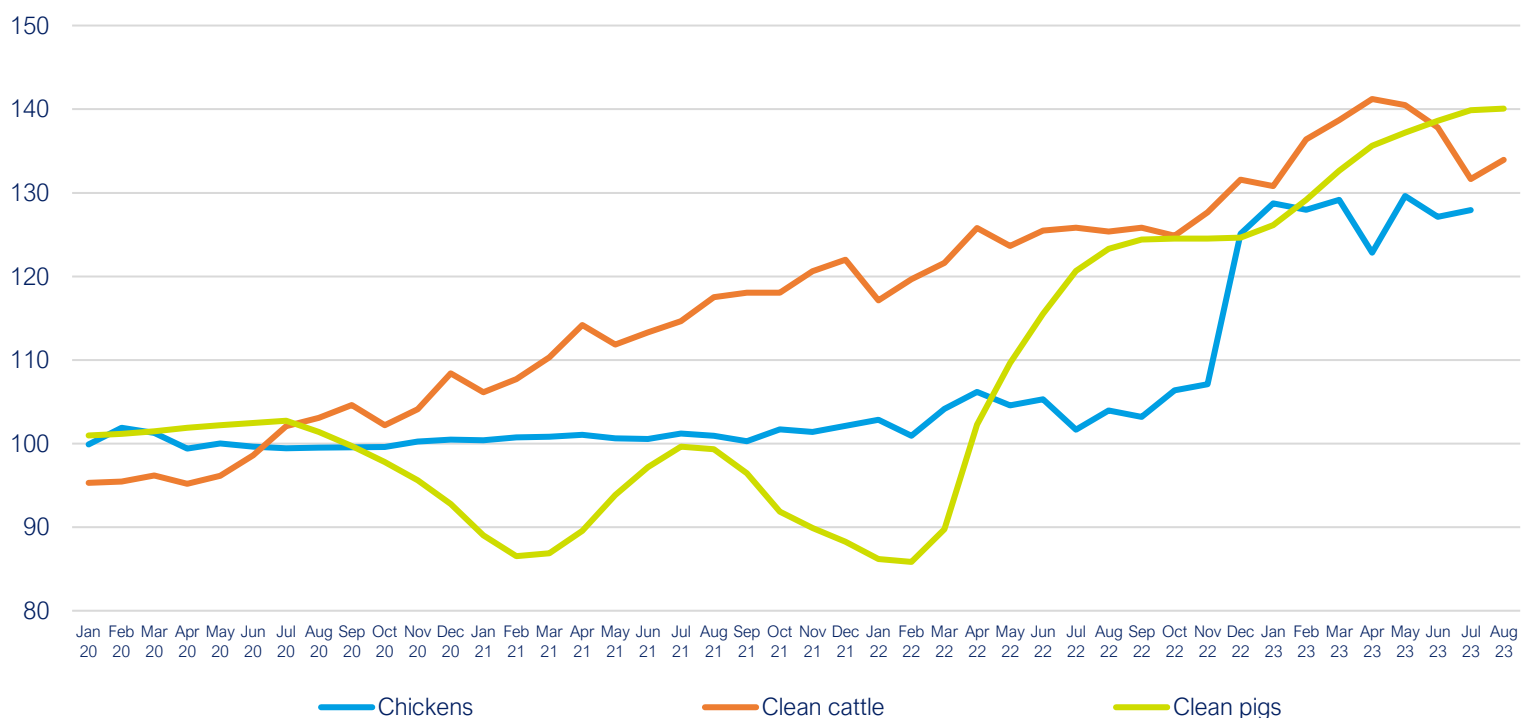
Eggs, 2020 = 100



**Source: Department for Environment, Food & Rural Affairs**

Note: This data is only available to August 2023

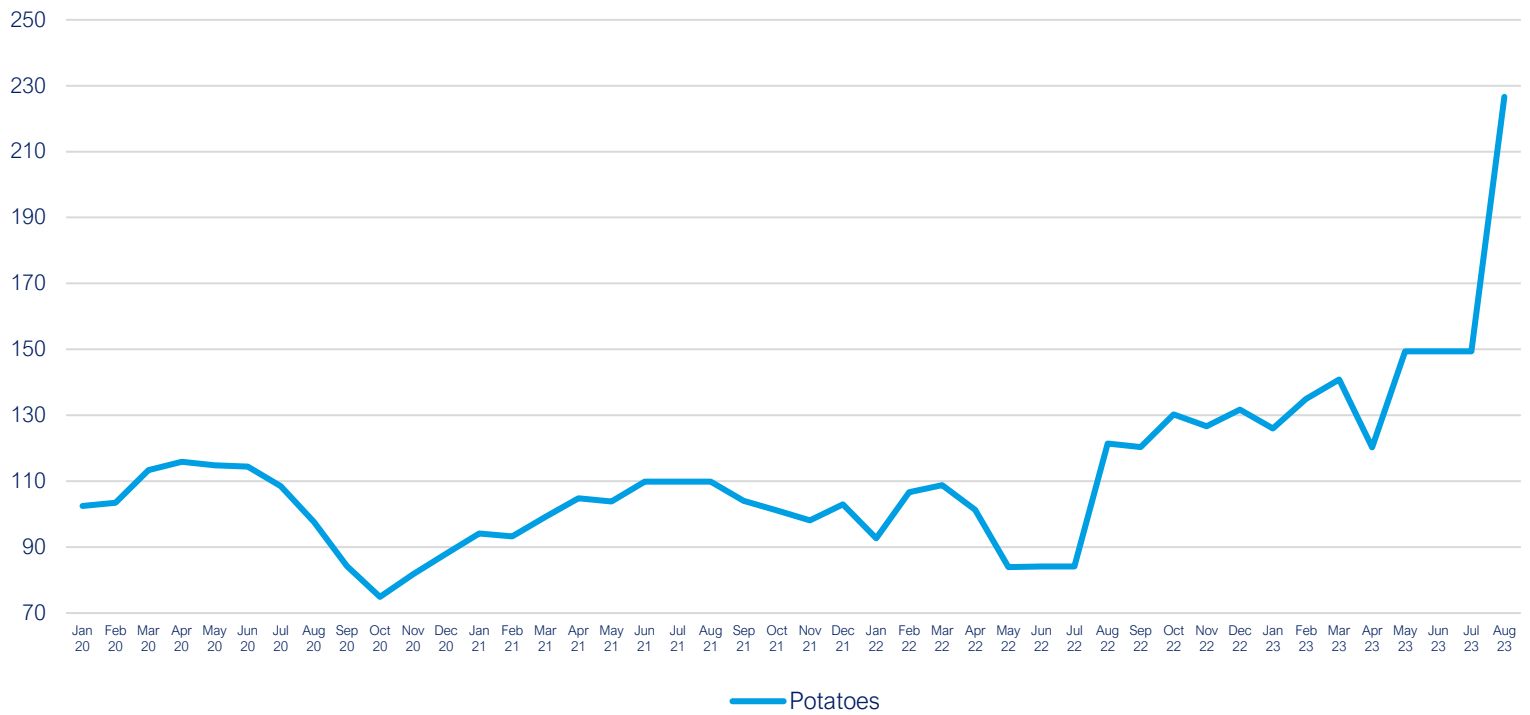
Chicken, beef and pork, 2020 = 100



**Source: Department for Environment, Food & Rural Affairs**

Note: This data is only available to August 2023

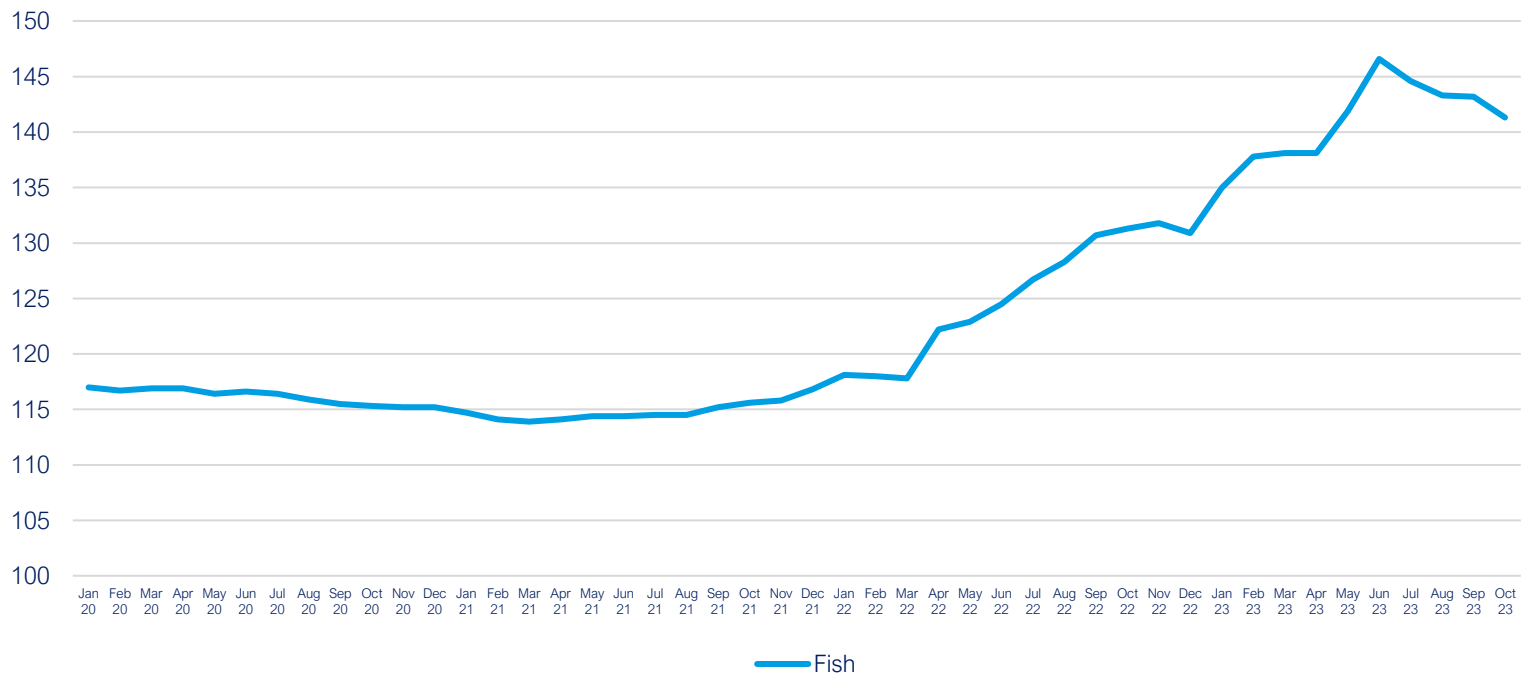
Potatoes, 2020 = 100



**Source: Office for National Statistics**

Note: This data is only available to August 2023

Preserved and processed fish, crustaceans and molluscs for domestic market, 2015 = 100



**Source: Office for National Statistics**

## Sources

**Agriculture and Horticulture Development Board (AHDB), UK Wholesale Prices**

**Department for Environment, Food & Rural Affairs, Agricultural Price Indices**

**Eurostat, HICP - monthly data (annual rate of change)**

**Freightos, Global Container Freight Index (FBX)**

**Office for National Statistics, Consumer Price Inflation & Producer Price Inflation**

**The World Bank, Commodity Markets, Monthly Prices**

**Trading Economics, Commodity Prices**

**Transport Exchange Group, Road Transport Price Index**

# About the FDF

The FDF is a powerful voice for the UK's vibrant, resilient and diverse food and drink manufacturing industry. For over 100 years, we have successfully contributed to policy making and legislative development, championing our members' views – large and small – on the critical issues of the day.

We bring together business, government and stakeholders to ensure our manufacturers have the right conditions to grow, invest and employ, while continuing to produce high quality, nutritious and affordable food and drink. With more than 1,000 members – from the most recognisable global brands to the most innovative start-ups – we represent the largest manufacturing sector in the country.

---

Food and Drink Federation  
10 Bloomsbury Way  
London  
WC1A 2SL

Tel: 020 7836 2460  
Email: [generalenquiries@fdf.org.uk](mailto:generalenquiries@fdf.org.uk)  
Web: [fdf.org.uk](http://fdf.org.uk)  
Twitter: [@Foodanddrinkfed](https://twitter.com/Foodanddrinkfed)

**fdf** food & drink  
federation  
passionate about food & drink