

How to improve data collection for packaging EPR

9 March 2023



Certified



This company meets the highest standards of social and environmental impact

Corporation



Anna Quantick

Client services manager



Sarah Farmer

Key account manager



Agenda

- Introduction to the data value chain
- Understanding your data demands
- Top tips to improve data collection
- Data security
- Support from Ecosurety
- Q&A

Introduction to the data value chain

Certified

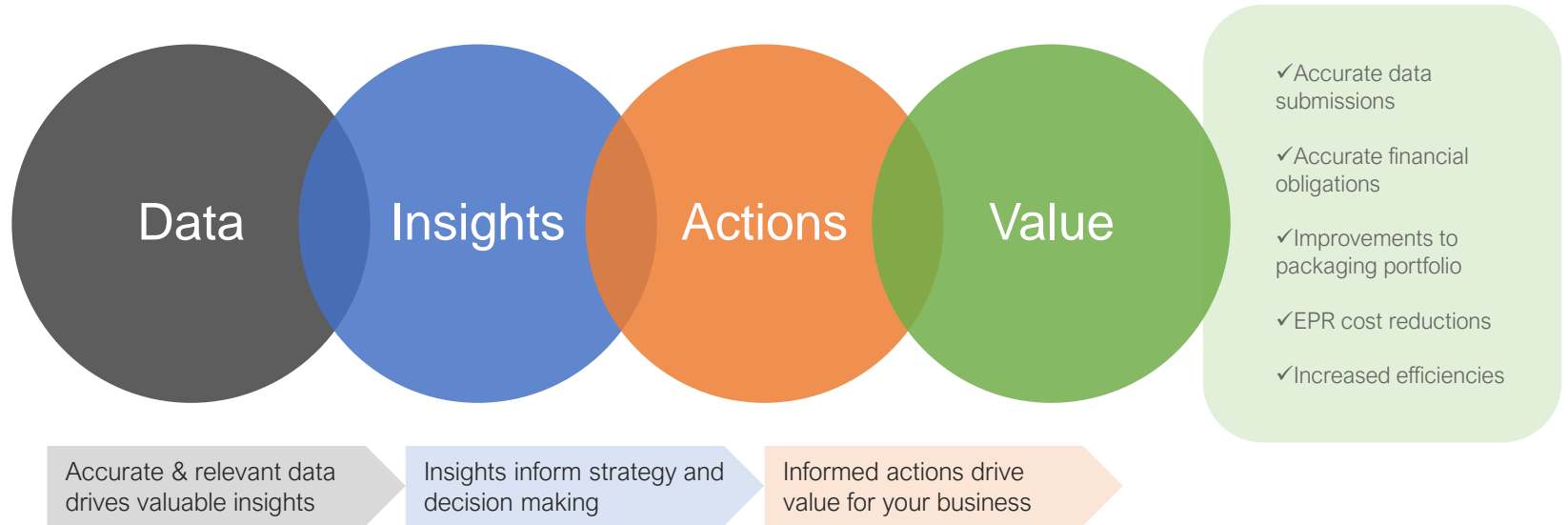


This company meets the
highest standards of social
and environmental impact

Corporation



The data value chain



Understand your data demands

Certified



This company meets the
highest standards of social
and environmental impact

Corporation



Critical questions to answer now

Identify now:

What data do you need to collect?

- a) How is your org classed under EPR?
- b) What are your EPR reporting requirements?
- c) What is missing from your existing data?
- d) What other valuable data can you collect?
- e) What are your data sources?

When do you need to collect the data?

- a) How can you achieve timely data collection?
- b) Can you improve when you collect it?

When do you need to report it?

- a) When do the data submissions open and close?
- b) Do the separate nation data deadlines apply?

Top tip!

Then assess:

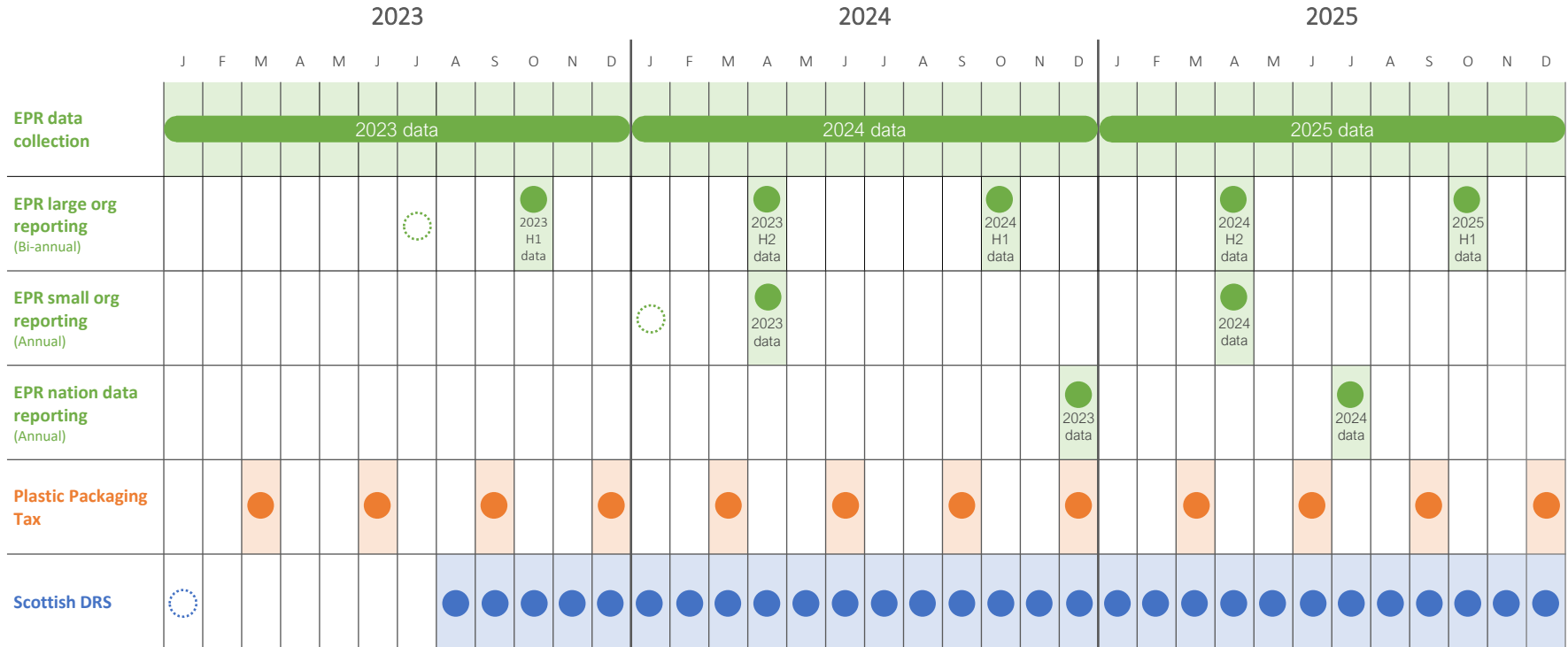
Do you have adequate resources?

- a) People
- b) Systems
- c) Budget
- d) Time

Do you need to:

- a) Increase your in-house resources
- b) Or externalise:
 - a) Data collection
 - b) Data reporting
 - c) Data management

Data reporting frequency



○ Registration opens

● Data reporting deadline

Gov.uk packaging EPR data checker tool

The screenshot shows the Gov.uk website page for the 'Check if you need to report packaging data' tool. The page is titled 'Guidance' and 'Check if you need to report packaging data'. It provides information on when to report packaging data under extended producer responsibility (EPR). The page includes a 'Check now' button and a 'Related content' section with links to other resources.

GOV.UK

Home > Business and industry > Business and the environment

Guidance

Check if you need to report packaging data

Find out if you need to report packaging data under extended producer responsibility (EPR) for packaging.

From: [Department for Environment, Food & Rural Affairs](#) and [Environment Agency](#)
Published 22 December 2022

[Get emails about this page](#)

[Print this page](#)

Organisations that handle and supply (create, import, distribute or sell) packaging and packaged goods may be affected by EPR for packaging.

Use this tool to find out:

- if the regulations apply to you
- whether you'll need to pay a fee
- what you need to do next to comply with the regulations

You'll need to know:

- your annual turnover
- the ways that your organisation handles and supplies packaging
- the total weight (in tonnes) of packaging you handled and supplied in 2022

You do not need to report packaging data if you're a charity or a non-UK organisation that does not operate in the UK.

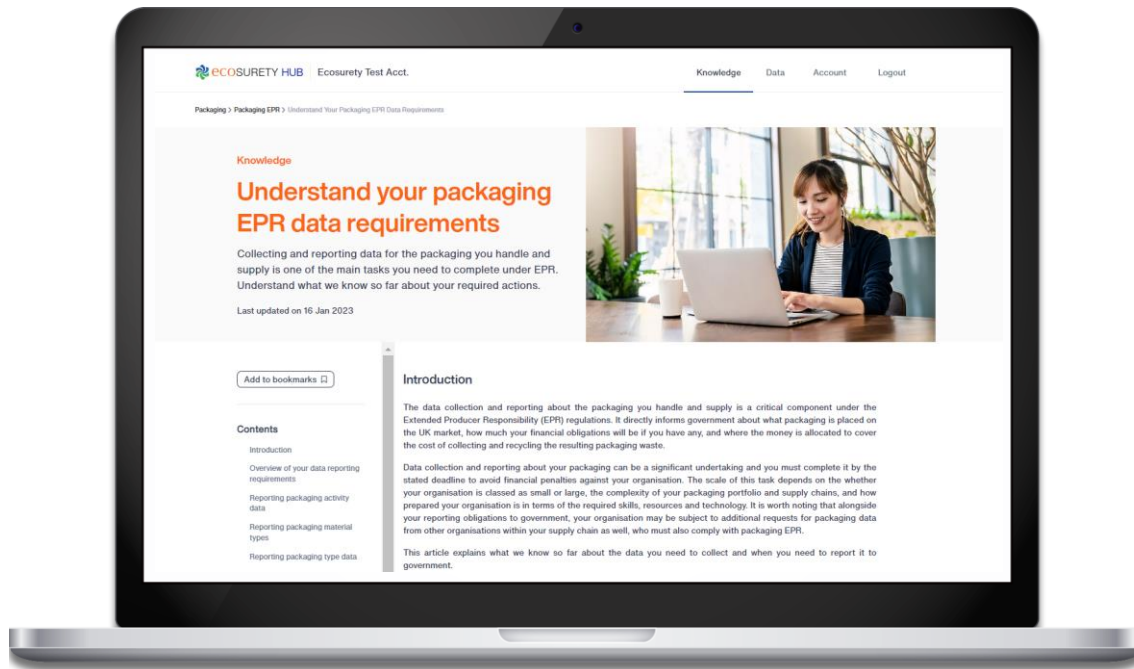
[Check now >](#)

Related content

- [How to collect your packaging data for extended producer responsibility](#)
- [Environment Agency's use of civil sanctions](#)
- [Packaging \(EPR\) Requirements Regulations: evidence notes](#)
- [Packaging waste: become a packaging producer compliance scheme \(PCS\)](#)
- [Registering as a small packaging producer using the allocation method: RPS 230](#)

- ✓ Free to use
- ✓ Find out if packaging EPR applies to you
- ✓ Understand your required data actions
- ✓ Useful summary of results
- ✓ Updated with the latest information by government

gov.uk/guidance/check-if-you-need-to-report-packaging-data



Packaging EPR knowledge content on hub.ecosurety.com
Non-Ecosurety members can request a free trial now



✔ Check my data coverage & accuracy



Data Health Assessment

A detailed report providing an outlook of how prepared your existing data is for EPR:

- ✔ Improve understanding of your EPR requirements
- ✔ Identify critical improvement actions
- ✔ Understand optional improvements that can drive value
- ✔ Avoid non-compliance
- ✔ Facilitate internal discussions on required resources and budget
- ✔ Online presentation of key findings
- ✔ Shareable PDF format

👉 Request yours now!

Prepare

Top tips to improve data collection

Certified



This company meets the
highest standards of social
and environmental impact

Corporation



Always question and confirm the quality of your data

Always ask:

- Is the data source trustworthy?
- When was the data created?
- How was the data captured?
- Is the data accurate?
- Is any data missing?
- When was the data last checked?
- Could you capture any extra detail?

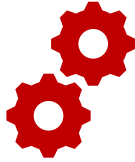
Top tip!

Audit your data:

- ✓ Check and audit data regularly
- ✓ Weigh packaging
- ✓ Check material specs
- ✓ Review data sources
- ✓ Check for data anomalies
- ✓ Complete audit internally and/or outsource it

Identify barriers to good data

The reason for inaccessible or poor data will usually be:



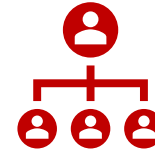
Technical

- Systems
- Equipment
- Processes



Personal

- Knowledge
 - Training
- Communication
- Relationships
- Responsibilities
- Accountabilities



Organisational

- Organisational complexities
 - Business priorities
 - Management
 - Resources
 - Budget

Top tip!

Identify and fully understand all your data barriers so you can take steps to overcome them

Brief all individuals who interact with your data

Who interacts with your data?

Identify the exact team and people within:

- Your business
- Parent company
- Subsidiaries
- Designers
- Manufacturers
- Suppliers
- Distributors
- Importers

Top tip!

Brief them properly:

- ✓ What data do you need?
- ✓ Why do you need it?
- ✓ Who you need it from?
- ✓ When do you need it?
- ✓ What format do you need?
- ✓ What is an acceptable standard?
- ✓ How should they send it?
- ✓ What don't you need?

Top tip!

Embed your EPR data requirements into your procurement process to form part of contracts and agreements

Ensure data consistency

Common causes of data inconsistency

- Different file and data formats
- Imperial vs metric
- Decimal placements (ie μg , g, Kg or T?)
- Data structure
- Material type terminology
- Incomplete data

Top tip!

Use a fixed, online form for requesting your data:

- ✓ Use fixed fields (ie kg or g only)
- ✓ Use pre-selection of material and packaging types
- ✓ Prevent free text input
- ✓ Make fields required
- ✓ Capture metadata:
 - Who submitted it
 - When was it submitted
 - How was it obtained

Top tip!

You can also outsource your data collection to Ecosurety

Timing and frequency of data

Capture data as frequently as possible – not just before a submission!

Infrequent data capture risks:

- Data inconsistencies
- Data anomalies
- Missed reporting deadlines
- Reduced time to check/audit data
- Reduced relevance for insights
- Increased stress!

Top tip!

Frequently captured data:

- ✓ Is more relevant
- ✓ Is easier to track quality
- ✓ Provides more valuable insights
- ✓ Aim to capture data when it is created, when packaging is:
 - ✓ Handled
 - ✓ Supplied
 - ✓ Shipped
 - ✓ Manufactured
 - ✓ imported

Improving data coverage

Low data coverage:

- Is caused by:
 - Poor communication
 - Poor planning
 - Low resources
 - Uncaptured data
- It risks:
 - Inaccuracies
 - Incomplete data submissions
 - Non-compliance
 - Lack of insights

Top tip!

Proactively improve data coverage

- ✓ Seek improvements and efficiencies for data capture
- ✓ Identify products with the same packaging formats
- ✓ Identify alternative data sources:
 - Packaging spec sheets
 - Material spec sheets
 - Supplier orders and invoices

Use normalised data

Compiled data

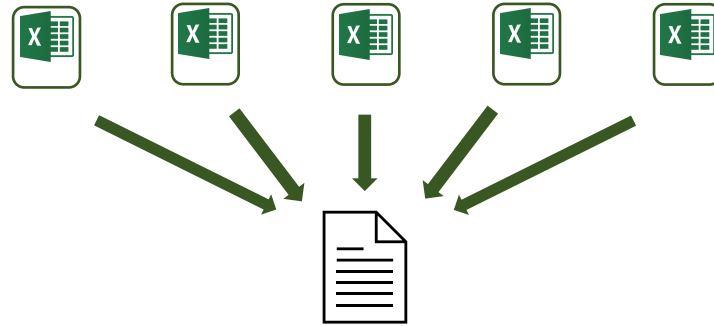


All data is stored within one dataset

- Data redundancy risk
- Low integrity and efficiency
- Large database and file size

Vs

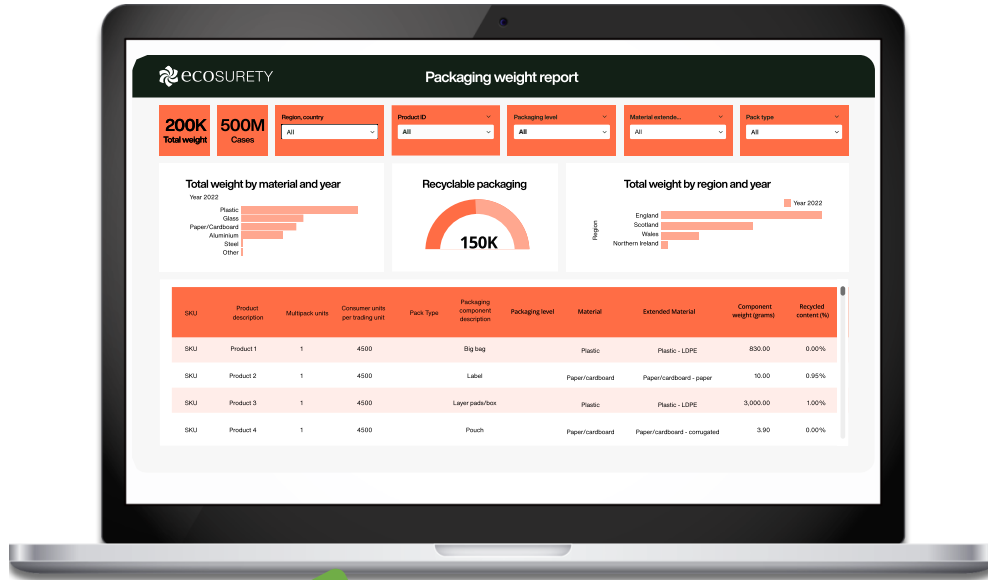
Uncompiled normalised data



Data is stored in separate datasets with established relationships.
Data is compiled only as required for specific tasks and reports.

- ✓ Avoids data redundancy
- ✓ Increases integrity and efficiency
- ✓ Reduces database and file size

Drive insights from your data



Top tip!

Drive insights from your data to:

- ✓ Track data capture progress
- ✓ Monitor data coverage and accuracy
- ✓ Identify suppliers, products & SKUs whose data is:
 - Missing
 - Incomplete
 - Out of date
 - Flagged as an anomaly
- ✓ Efficiently target data capture improvements

Top tip!

Ecosurety has data analytic services – visit hub.ecosurety.com for more information

Data security

Certified



This company meets the
highest standards of social
and environmental impact

Corporation



Collect and store data securely

Data risks

- Your data is valuable, sensitive and business critical
- Emailing of data via spreadsheets is not secure
- Spreadsheets are also difficult to control. Would you know if someone has:
 - Amended?
 - Copied?
 - Shared?
 - Deleted?
 - Exported?

Top tip!

Apply data security

- ✓ Work to ISO 27001 standards
- ✓ Use a data system to collect and manage your data
- ✓ Control and track who can edit, import and export your data
- ✓ Ecosurety systems work to this standard

Support from Ecosurety

Certified



This company meets the
highest standards of social
and environmental impact

Corporation



- ✔ Understand how EPR impacts me
- ✔ Model my regulatory costs
- ✔ Check my data coverage & accuracy
- ✔ Plan my data collection process

Prepare

- ✔ Collect in-house and supply chain data
- ✔ Facilitate regular data gathering
- ✔ Centralise all packaging data
- ✔ Externalise your data collection

Collect

- ✔ Gain material management insights
- ✔ Increase data coverage and accuracy
- ✔ Commission bespoke data consultancy
- ✔ Assess UK and international obligations
- ✔ Reduce environmental and financial impacts
- ✔ Identify suppliers/SKUs/product lines to improve

Improve

- ✔ Validate data accuracy
- ✔ Complete data reporting obligations
- ✔ Calculate regulatory obligations

Comply

✔ Check my data coverage & accuracy



Data Health Assessment

A detailed report providing an outlook of how prepared your existing data is for EPR:

- ✔ Improve understanding of your EPR requirements
- ✔ Identify critical improvement actions
- ✔ Understand optional improvements that can drive value
- ✔ Avoid non-compliance
- ✔ Facilitate internal discussions on required resources and budget
- ✔ Online presentation of key findings
- ✔ Shareable PDF format

👉 Request yours now!

Prepare

✔ Data collection and management



Collect

Data collection support

Essential support from the Ecosurety expert data team, including:

- ✔ Regularly collect in-house and supply chain data
- ✔ Improve data collection accuracy
- ✔ Data management support
- ✔ Identify and implement data efficiencies
- ✔ Externalise data collection

👉 Request a meeting with the Ecosurety team to find out more

Comply

✓ Full compliance service



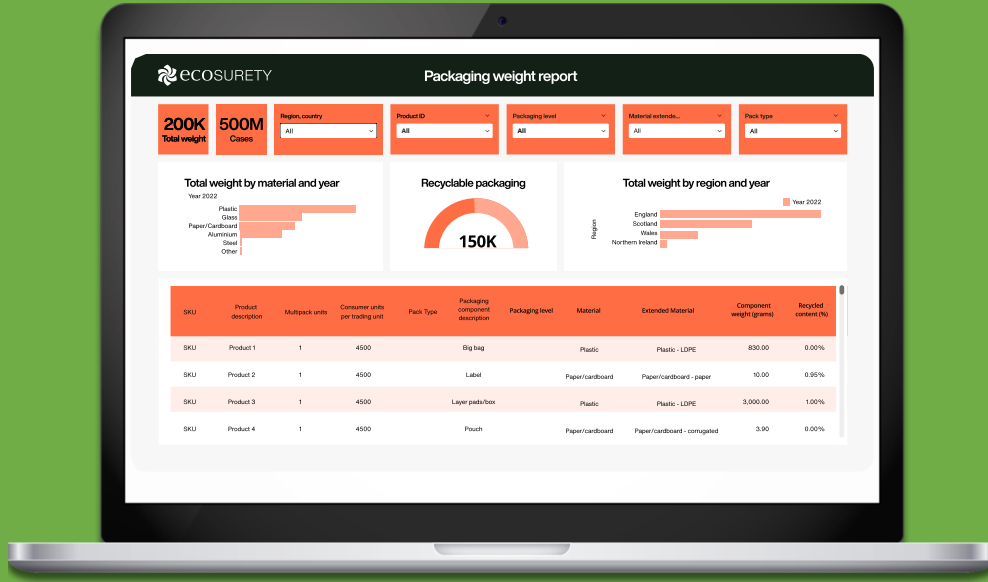
Ecosurety membership

Ecosurety members benefit from a comprehensive compliance service including:

- ✓ Dedicated account manager
- ✓ Compliance deadline reminders
- ✓ Validation of raw data accuracy
- ✓ Submission of data on your behalf
- ✓ Insight on financial obligations
- ✓ Competitive PRN purchasing
- ✓ Access to essential training and knowledge

✓ Drive data improvements

Improve



Packaging data analytics

Track and share progress on your EPR, Plastic Packaging Tax (PPT) and DRS data quality:

- ✓ Prepare for EPR, PPT and DRS
- ✓ Visualise missing data at a glance
- ✓ Increase data coverage and accuracy
- ✓ Track data capture progress with suppliers
- ✓ Identify improvement opportunities on brands, product categories, suppliers and SKUs

Q&A



Certified



This company meets the
highest standards of social
and environmental impact

Corporation



Certified



This company meets the
highest standards of social
and environmental impact

Corporation

Thank you

0333 4330 370

info@ecosurety.com

www.ecosurety.com

 [@ecosurety](https://twitter.com/ecosurety)

 [Ecosurety](https://www.linkedin.com/company/ecosurety)

